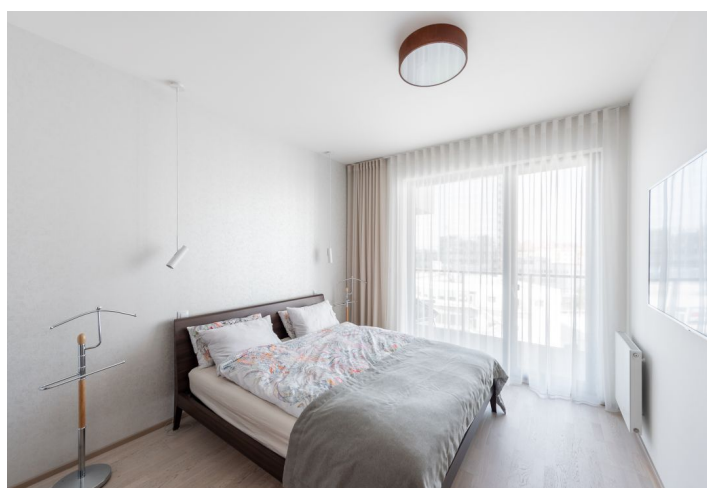




## Apartment Two-bedroom (3+kk)

**Sold**

97.1 m², Prague 7, Holešovice, Sanderova





## Apartment Two-bedroom (3+kk)

**Sold**

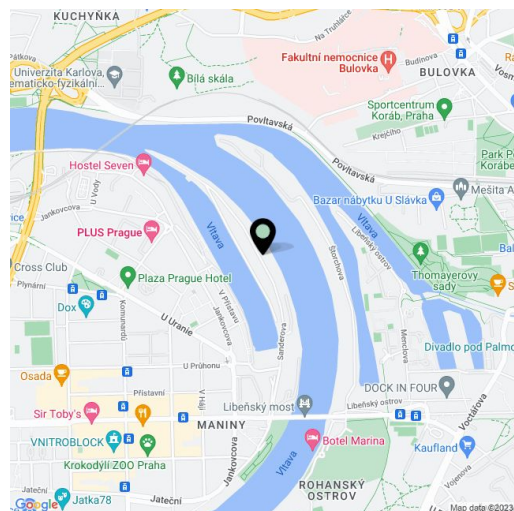
97.1 m², Prague 7, Holešovice, Sanderova

Total area	118 m²
Floor area*	97 m²
Balcony	21 m²
Parking	1 000 000 CZK
Garage	Yes
Cellar	-
Service price	9 936 CZK monthly
PENB	B
Reference number	100394

This modern, bright apartment with 2 balconies, beautiful views of the river, and a garage parking space is part of the premium Marina Island project, a few steps away from a golf course. The popular, ever-developing neighborhood of Holešovice is part of the wider center, a place with everything you need, including rich opportunities for cultural and sports activities.

The practical layout of the 5th floor apartment offers a living room connected to a kitchen, dining room, and **balcony**; the private zone on the opposite side of the apartment consists of 2 bedrooms, a bathroom (with a bathtub, shower, toilet, and sink), and a separate toilet. In the master bedroom is a niche with a wardrobe and a built-in safe; in the hall is a closet with a connection for a washing machine, which offers additional storage space. The **east-facing balcony** off of the living room, accessed through a large sliding glass portal, provides **direct views of the river**, while a second **balcony** with access from both bedrooms faces west onto the **residence's park** with an ornamental fountain.

Facilities include **hardwood oak three-layer floors**, energy-efficient triple-glazed windows and balcony doors with **exterior electric blinds**, **Hanák interior veneer doors**, a **heated floor** in the bathroom, **Hansgrohe** faucets, **Laufen** sanitary ware, a **Hüppe** shower, and a **Riho** bathtub. The Sykora kitchen with an all-ceramic cooktop is equipped with built-in **Bosch** appliances and an **American Samsung refrigerator**. Central heating. The purchase price includes a **garage parking space** and a **spacious cellar storage unit**. The residence, completed in 2018, offers a private fitness center, a common room, a central entrance connected to a **reception**, a camera system, security, or an automatic car and **bike wash** in the garage.



\* Area of the unit according to the Civil Code. The area consists of the sum total area of the entire unit bounded by perimeter walls.

The successful residential complex is located on the site of a former port on a **peninsula** between the river and its arm. The project is part of the continuous original development of Holešovice with a full-fledged infrastructure; within walking distance are many shops, restaurants, bistros and cafes, schools including the prestigious **Duhovka Montessori gymnasium**, the La Fabrika and Jatka78 **theaters**, the DOX contemporary art center, or **Vnitroblok** creative center, as well as a sports field (**golf club, tennis courts**). The ride to the city center is quick by public transport, by car, scooter, or bicycle, and you can easily connect to a **bike path** that connects the entire city of Prague. Tram stops are close to the house, and the Palmovka, Nádraží Holešovice, and Vltavská metro stations are also nearby.

Floor area 97.1 m², balconies 11.6 m² and 9.7 m², cellar 12.9 m².

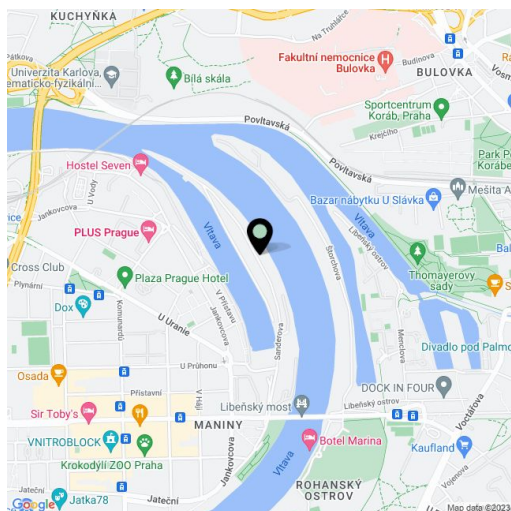


## Apartment Two-bedroom (3+kk)

**Sold**97.1 m<sup>2</sup>, Prague 7, Holešovice, Sanderova

Total area	118 m <sup>2</sup>
Floor area*	97 m <sup>2</sup>
Balcony	21 m <sup>2</sup>
Parking	1 000 000 CZK
Garage	Yes
Cellar	-
Service price	9 936 CZK monthly
PENB	B
Reference number	100394

In addition to regular property viewings, we also offer real-time video viewings via WhatsApp, FaceTime, Messenger, Skype, and other apps.



\* Area of the unit according to the Civil Code. The area consists of the sum total area of the entire unit bounded by perimeter walls.



## Apartment Two-bedroom (3+kk)

**Sold**

97.1 m², Prague 7, Holešovice, Sanderova

**Byt****3+kk**

1	Hala	10,8 m²
2	Obývací pokoj + kuchyň	37,4 m²
3	Pokoj	17,1 m²
4	Pokoj	15,6 m²
5	Koupelna + WC	6,4 m²
6	WC	1,9 m²
7	Komora	2,7 m²
Místnosti celkem		91,9 m²
Podlahová plocha		97,1 m²
8	Balkon	
9	Balkon	

