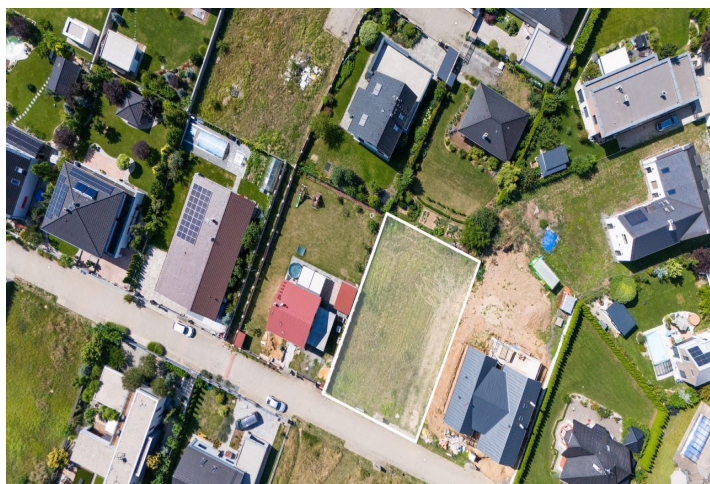




## Land

810 m<sup>2</sup>, Praha-západ, Jesenice, Na Vrbici

€ 459 947 | CZK 11 340 000







## Land

810 m<sup>2</sup>, Praha-západ, Jesenice, Na Vrbici

€ 459 947 | CZK 11 340 000

Price per sq. m.	14 000 CZK
Total area	810 m <sup>2</sup>
Land type	Housing
Reference number	100424

This flat plot of land with all utility network connections and the possibility of building a southwest-facing family house is part of a new development between the villages of Dobřejovice and Jesenice. The area is situated in the middle of fields and meadows not far from the famous Průhonice Park.

Utility networks are connected to the plot with a regular rectangular shape; access is via an illuminated road with interlocking paving. The maximum level of buildability is 30%, the proposed **built-up area of the house and garage is 136.7 sq. m.**, and the height of the house is 8.79 m. The plan has been approved by the building authority.

This quiet place is located **at a convenient distance from everything you need**. Prague is very well accessible thanks to the nearby exit to the Prague Ring Road and the D1 highway. A large shopping center, a **water park**, and schools, including the **Sunny Canadian International School**, are within easy reach. Several **bike paths** pass through the local landscape, and the vast **Průhonický Park**, botanical, and dendrological gardens are ideal for walks.

Total area 810 m<sup>2</sup>.

