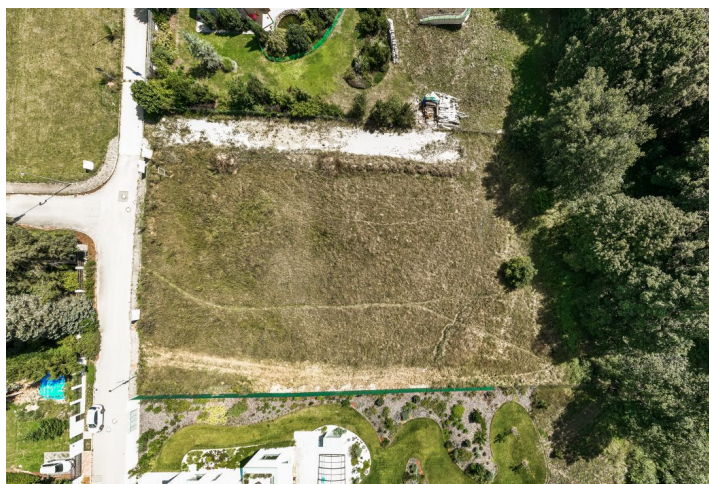




## Land

2 088 m<sup>2</sup>, Kladno, Unhošť, Na Lukách

€ 361 421 | CZK 8 900 000







## Land

2 088 m², Kladno, Unhošť, Na Lukách

€ 361 421 | CZK 8 900 000

Price per sq. m.	4 262 CZK
Total area	2 088 m²
Land type	Housing
Reference number	101122

This sunny, 2,088 sq. m. plot of land is right next to a forest, in a residential area between the town of Unhošť and the village of Malé Kyšice. A pleasantly quiet place located near the Povodí Kačáku Nature Park and Křivoklátsko Nature Reserve near the western edge of Prague, which is easily accessible via the D6 highway.

The land is suitable for the construction of a family house; **utility networks** are on the border of the **south-facing**, slightly sloping plot. The **building coefficient** has an upper limit of **20%**. Access to it is via an illuminated asphalt road with a sidewalk. Its location right next to a forest guarantees future residents utmost **privacy** at home and in the garden.

The peaceful location on the border of the **Křivoklátsko PLA** allows quick access to nature, but also to all necessary services. The center of Unhošť with a state and private kindergarten and elementary school, art school, sports fields, shops, restaurants, cafes, and medical services is about 5 minutes away by car or less than 10 minutes by bus from a nearby stop, and you can also drive to the airport in less than half an hour or connect to the Prague Ring Road. **Hiking and bike trails** lead through the beautiful wooded surroundings.

Total area 2,088 m².

