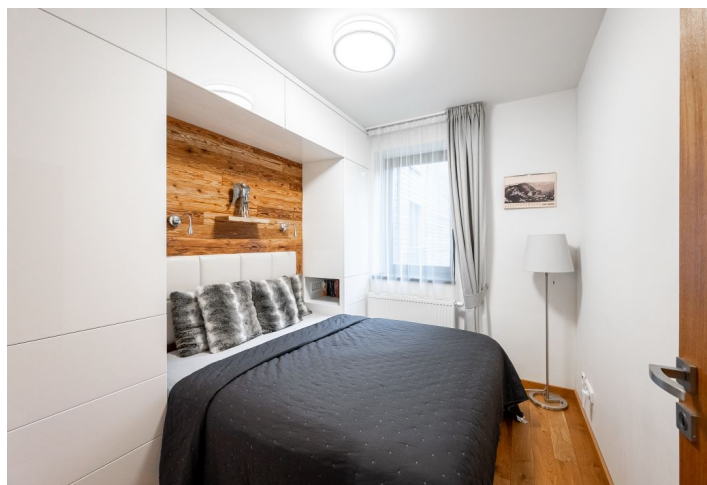




Apartment Two-bedroom (3+kk)

Sold

63.3 m², Jablonec nad Nisou, Harrachov





Apartment Two-bedroom (3+kk)

Sold

63.3 m², Jablonec nad Nisou, Harrachov

Total area	71 m²
Floor area*	63 m²
Loggia	7 m²
Parking	Garage parking space
Cellar	Yes
PENB	G
Reference number	103119

This stylish apartment with a loggia overlooking the greenery is located on the 1st floor of a modern mountain apartment building. A beautiful and quiet place on the edge of Harrachov, next to a forest path, along which you can reach the Mumlava Waterfalls in a few minutes, go cycling or cross-country skiing in the Krkonoše National Park.

The apartment consists of a living room with a kitchen, a fireplace, and access to the southwest-facing loggia, a master bedroom created from the original wardrobe, a second bedroom, a bathroom (with a bathtub, sink, and toilet with a bidet shower), a utility room (with a washing machine and a boiler), and an entrance hall.

The building was approved in 2018. The interior is cozy thanks to the hardwood floors, doors, and paneling, and furniture that was made to measure. The heating is gas with the possibility of remote control via an app. The purchase price includes a garage space and 2 cellars: a cellar cubicle in the basement and a cellar on the same floor as the apartment.

Conveniently located right next to a hiking trail, bike trails, and many groomed ski tracks, including the Krkonoše highway, with a sports hall and the Mining Museum nearby, as well as the Rýžoviště cable car, which is part of the Harrachov ski resort. The place is excellently accessible all year round. The drive from the outskirts of Prague takes about an hour and a half, and there is also a bus station not far from the apartment with direct connections from Prague.

Floor area 61.8 m², loggia 7.2 m², storage room on the floor, basement.

In the owner's statement, the apartment is listed as a 2-bedroom with a dressing room.



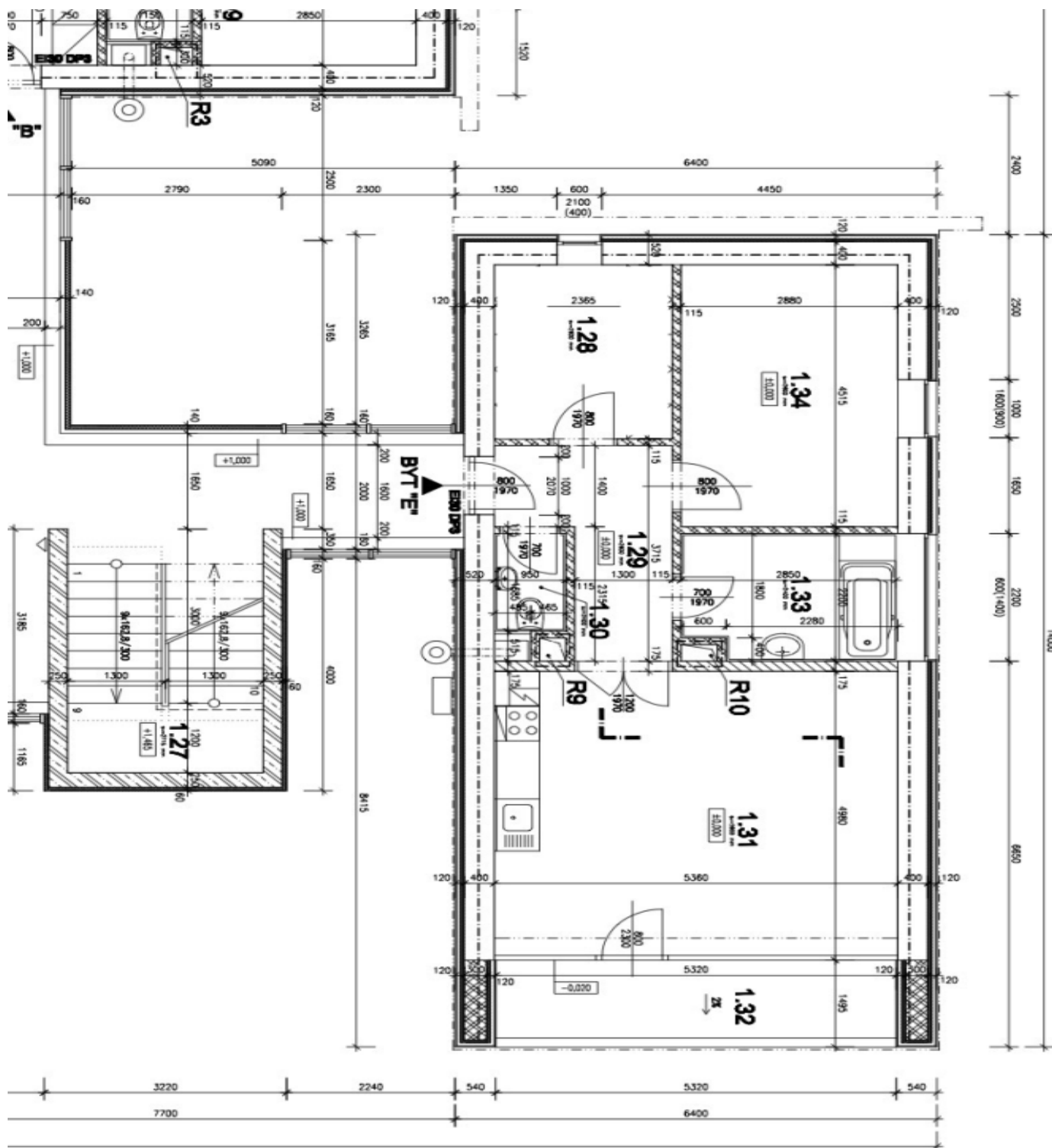
* Area of the unit according to the Civil Code. The area consists of the sum total area of the entire unit bounded by perimeter walls.



Apartment Two-bedroom (3+kk)

63.3 m², Jablonec nad Nisou, Harrachov

Sold



1:27