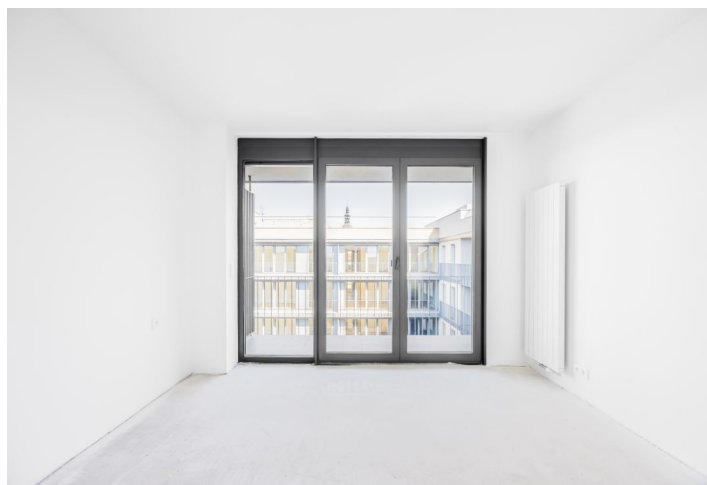
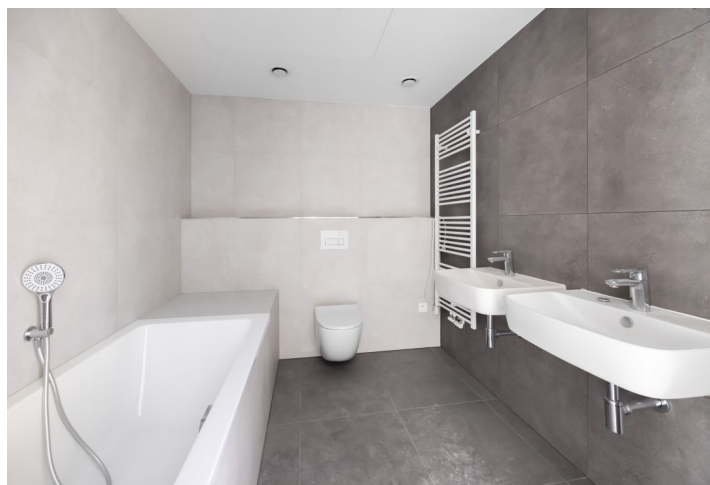
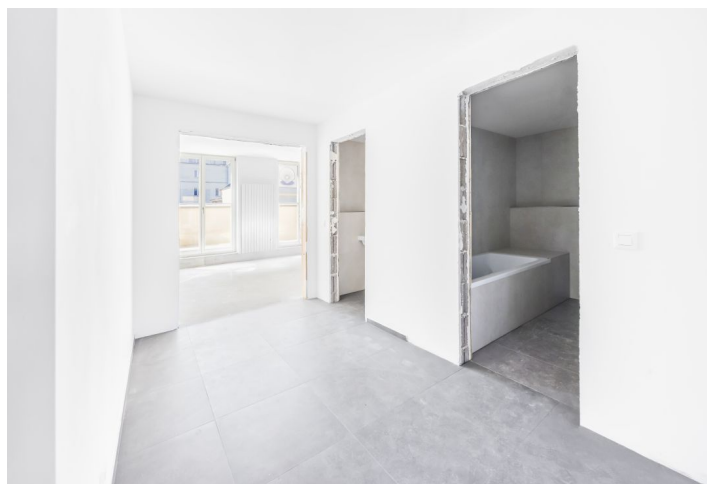




Apartment Two-bedroom (3+kk)

€ 398 165 | CZK 9 814 773

89.6 m², Ostrava-město, Moravská Ostrava, Masarykovo náměstí





Apartment Two-bedroom (3+kk)

€ 398 165 | CZK 9 814 773

89.6 m², Ostrava-město, Moravská Ostrava, Masarykovo náměstí

Total area	122 m²
Floor area*	90 m²
Terrace	20 m²
Loggia	12 m²
Parking	Parking space at an extra cost
Garage	Yes
Cellar	2 m²
PENB	B
Reference number	103159

This bright apartment with a terrace, a loggia, and the possibility of purchasing a garage parking space is part of the unique Nové Lauby residential complex. This new project is being created right in the center of Ostrava near Masaryk Square with a fountain, within walking distance of a full range of services and a park.

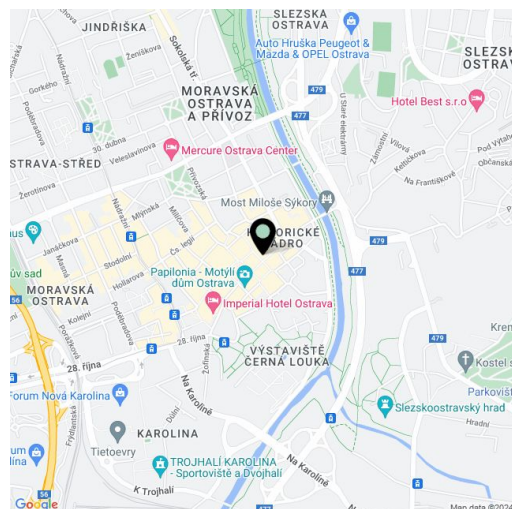
The layout consists of a living room with a preparation for a kitchen, two bedrooms, a bathroom with a toilet, a separate guest toilet, and an entrance hall. **The apartment has a terrace and a loggia.**

The project was designed by the renowned **znamení čtyř - architekti studio**. The new five-story building will be covered with **greenery**, and a **landscaped atrium** will be created in the complex's center. The interior is illuminated by **large-format windows** with aluminum or wooden frames and electrically operated blinds, while the floors will be three-layer **oak**. **There is a possibility to buy a parking space.**

The apartment complex will become a natural part of the historic center of Ostrava. In the area around Masaryk Square, you can enjoy cafes, restaurants, a shopping center, a museum, a cinema, or a library. Schools and the Antonín Dvořák Theater are a few minutes' walk away. Part of the city monument zone is the large park on Černá Louka and the Ostravice River is lined with bike paths.

Floor area 89.6 m², terrace 20.2 m², loggia 12 m², cellar 2.4 m².

For more information about the project, visit the website www.novelauby.cz



* Area of the unit according to the Civil Code. The area consists of the sum total area of the entire unit bounded by perimeter walls.