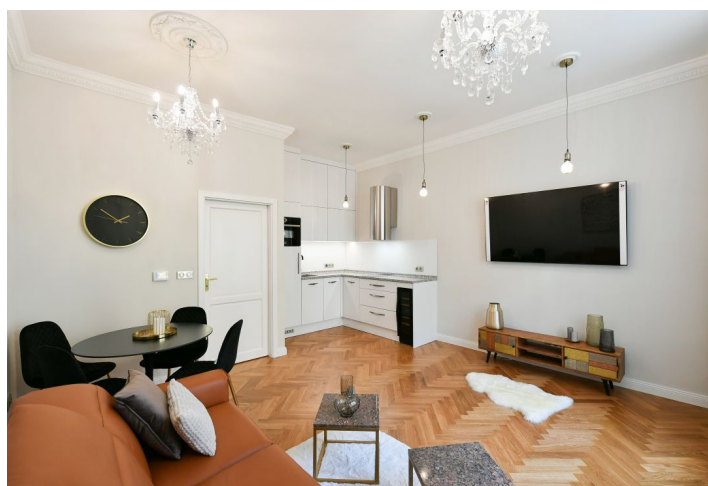




Apartment One-bedroom (2+kk)

Sold

55 m², Prague 10, Vršovice, Tolstého



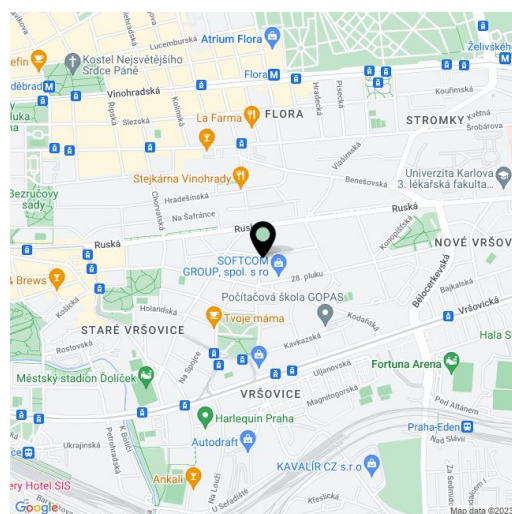


Apartment One-bedroom (2+kk)

Sold

55 m², Prague 10, Vršovice, Tolstého

Total area	55 m²
Parking	-
Cellar	Yes
Service price	2 536 CZK monthly
PENB	G
Reference number	103295



* Size of the unit according to the Housing Act.
The area consists of the sum total of the internal
area of every room.

This classic apartment with high ceilings, which has just been totally renovated, is situated on the 2nd floor of an Art Nouveau apartment building located on a one-way side street lined with trees at the border of Vršovice and Vinohrady.

The floor area of the west-facing apartment is divided into a living room with a kitchen, 1 bedroom, an entrance hall, a separate toilet, a hall, and a bathroom (spacious walk-in shower, toilet with a **bidet shower**, sink).

The apartment with 3m high ceilings was **sensitively renovated** with respect to the character of the building. There are thresholdless **grade I parquet floors**, windows are **wooden** and double-glazed, the interior cassette doors are made of hardwood. The kitchen is equipped with a **Bianco Sardo granite worktop** and **Bosch** appliances, as well as a **built-in Klarstein wine cellar**. Built-in wardrobes in the hall, and the bedroom also provides plenty of storage space. Sanitary ware and faucets are by **Villeroy & Boch** and **Hansgrohe** (there is an economical aerator in the sink faucet). Heating is provided by a Protherm electric boiler connected to a **Honeywell intelligent home system** that enables remote control of the heating from anywhere. The building was renovated in 2008-2010; **the elevator** stops at each mezzanine level.

An excellent location on a side street with **mature trees**, very close to one of the most beautiful Vršovice streets, Kodaňská, with many cafes, bistros, restaurants, and shops. Not far away a small **park** with a children's playground, not far from the **Heroldové Sady** or **Grébovka parks**. A few steps lead to a bus stop, which can take you to the Náměstí Míru metro station or directly to the city center in no time.

Floor area 55 m², cellar.



Apartment One-bedroom (2+kk)

Sold

55 m², Prague 10, Vršovice, Tolstého

