



Apartment Two-bedroom (3+kk)

Sold

89.5 m², Prague 6, Břevnov, Závěrka





Apartment Two-bedroom (3+kk)

Sold

89.5 m², Prague 6, Břevnov, Závěrka

Total area	90 m²
Parking	-
Cellar	-
Service price	2 772 CZK monthly
PENB	E
Reference number	103906

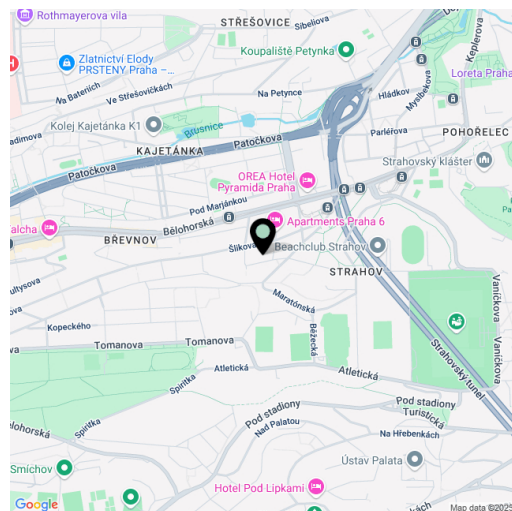
This completely renovated, sunny apartment is located on the 2nd floor of a well-maintained historic apartment building with a common garden in a nice part of Prague 6 - Břevnov, near Ladronka Park and Bělohorská Street, surrounded by cafes, restaurants, and shops.

The layout consists of a living room with an adjoining kitchen and pantry, 2 bedrooms, a bathroom (with a shower and toilet), a separate toilet, and an entrance hall.

The apartment **has been renovated** and has new **Euro windows** and laminate floors. There are built-in wardrobes in one bedroom and the entrance hall; the kitchen is equipped with built-in appliances including a **dishwasher and an induction hob**. Heating is provided by a gas boiler. The building is nicely maintained, partially renovated, and has a **new elevator**. A **nicely landscaped garden** is available to residents.

The historic apartment building is located in **the heritage-protected Tejnka zone**, just a 10-minute walk from Prague Castle. All amenities are within easy reach, and public and private schools, including the **J. Kepler High School**, are within walking distance. An excellent connection to the city center is provided by trams from a nearby stop, and the airport is also easily accessible. You can quickly connect to a tunnel complex by car.

Floor area 89.5 m².



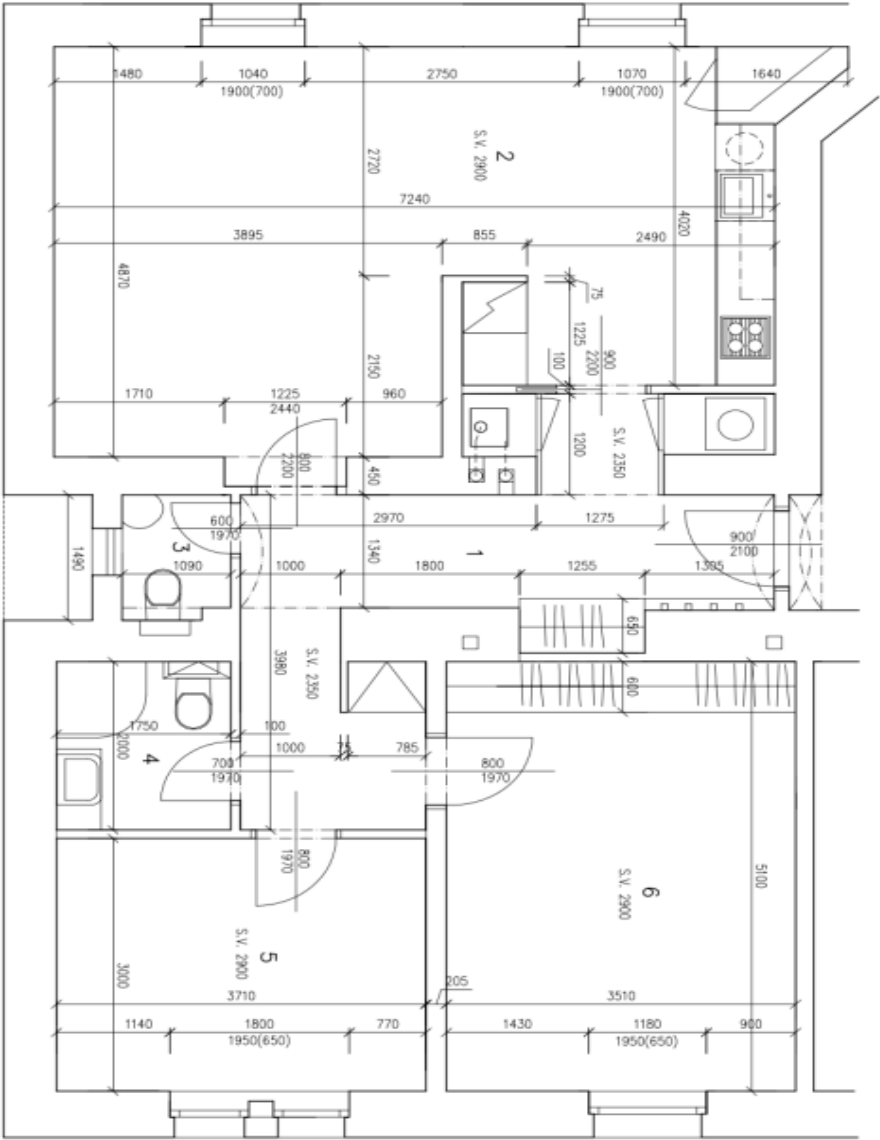
* Area of the unit according to the Civil Code. The area consists of the sum total area of the entire unit bounded by perimeter walls.



Apartment Two-bedroom (3+kk)

89.5 m², Prague 6, Břevnov, Závěrka

Sold



LEGENDA MÍSTNOSTI (PLOCHY BEZ ZDI)

Č.M.	MÍSTNOST	UŽIT.PL. m²
1	PŘEDSÍŇ	15,11
2	OBÝTNÍ KUCHŇ	32,54
3	WC	1,58
4	KOUPELNA	3,50
5	POKoj	11,13
6	LOŽNICE	17,90
CELKEM		81,76

UŽITNÁ PLOCHA BYTU 81,76m²
PODLAHOVÁ PLOCHA BYTU 89,53m²

BYT Č.6 – 3.NP
ZÁVĚRKA 399/7, PRAHA 6–BŘEVNOV
M 1:50
A3