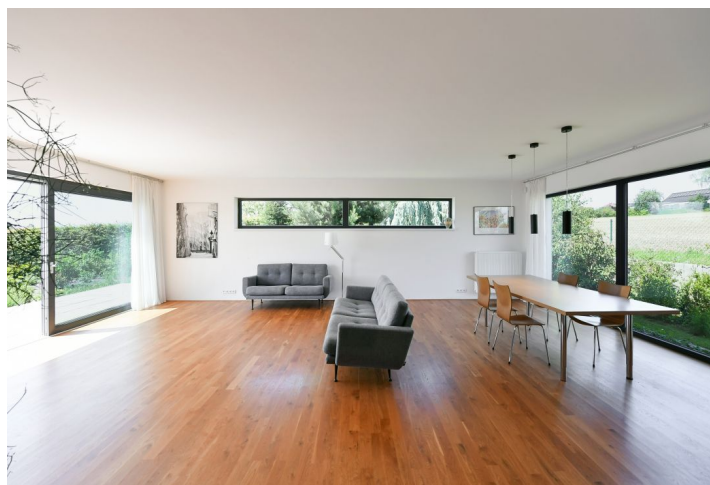




House Three-bedroom (4+1)

169 m², Kutná Hora, Zruč nad Sázavou, Nad Ovčínem

Sold





House Three-bedroom (4+1)

Sold169 m², Kutná Hora, Zruč nad Sázavou, Nad Ovčínem

Total area	169 m ²
Plot	1 085 m ²
Foot print	169 m ²
Floor area	138 m ²
Terrace	31 m ²
Parking	3 spaces on the plot (1 is covered)
Cellar	-
PENB	C
Reference number	104287

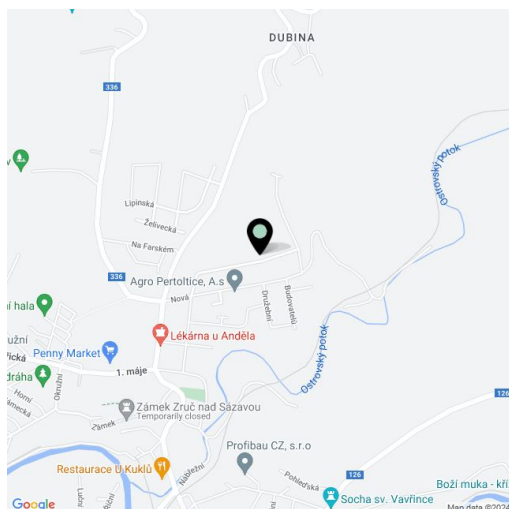
This modern and practically designed barrier-free family house with a light-filled minimalist interior, a sunny terrace, and a large, well-maintained south-facing garden is located on a quiet, elevated spot in a picturesque town situated in the beautiful Posázava countryside near Želivka and Kutná Hora.

The layout consists of a living room with an adjoining dining room, a partially separate kitchen, and access to the **terrace**, 2 bedrooms, a study, 2 bathrooms (1 with a bathtub, 1 with a shower, both with a toilet and bidet), a utility room/laundry room with storage space, a bright central corridor, and an entrance hall with a **walk-in wardrobe**.

The house was built in 2017 from high-quality insulating Ytong bricks. The windows are plastic with **triple glazing**, and on the south side additionally with electrically controlled exterior blinds. All rooms, the kitchen, and the hallway are connected by a **thresholdless wooden floor**, and the bathrooms have large-format tiles. Heating is provided by a gas boiler. There are **3 parking spaces** on the paved surface of the property, one of which is covered. **The garden** with an area of almost 1,000 m² is nicely maintained.

This quiet location in a new residential development on the outskirts of the city close to a **nature and hiking trail** allows you to be within easy reach of nature as well as the **historic core of the city**, which is less than 1 kilometer away. The dominant feature of Zruč nad Sázavou is a **castle** surrounded by a **park** with a view of the river. All the necessary infrastructure is within city limits, and transport connections with the surrounding cities are provided by trains and buses. You can take a direct bus to Prague to the **Roztyly metro station**, and by car you can connect to **the D1 highway** in no time. The surroundings offer many wonderful destinations, for example the world-famous **Kutná Hora** or **Blaník PLA**.

Total floor area 169.12 m² (including a 30,65 m² terrace), built-up area 169 m², garden 916 m², plot 1,085 m².

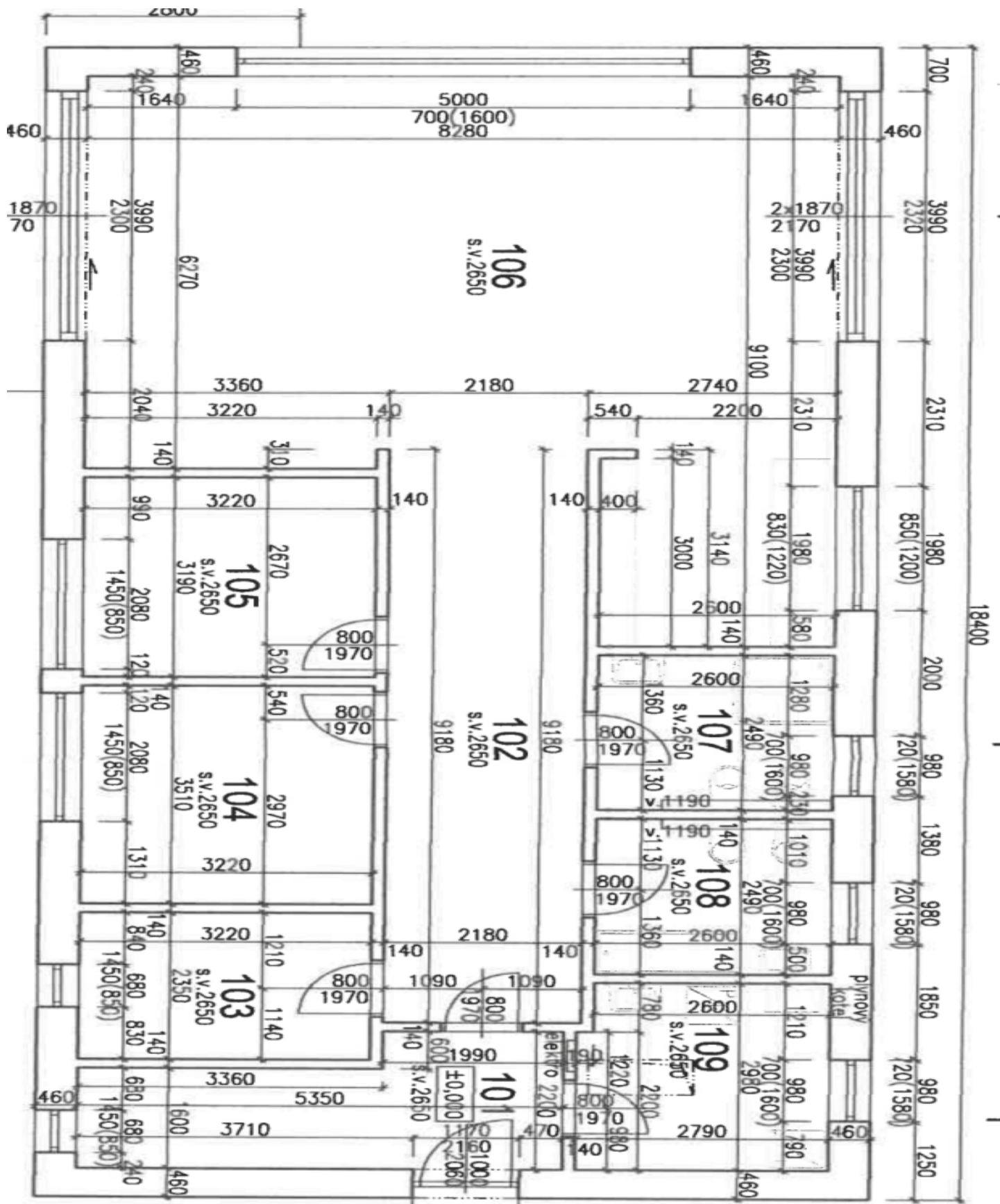




House Three-bedroom (4+1)

Sold

169 m², Kutná Hora, Zruč nad Sázavou, Nad Ovčínem



**House Three-bedroom (4+1)****Sold**169 m², Kutná Hora, Zruč nad Sázavou, Nad Ovčínem**Legenda místností 1.NP:**

Č. M.	NÁZEV MÍSTNOSTI	PLOCHA m ²
101	ZÁDVEŘÍ + ŠATNA	9,75
102	CHODBA	20,01
103	PRACOVNA	7,57
104	LOŽNICE	11,30
105	LOŽNICE	10,27
106	OBÝVACÍ POKOJ + KK + JÍDELNA	58,46
107	KOUPELNA + WC	6,47
108	KOUPELNA + WC	6,47
109	TECHNICKÁ MÍSTNOST	8,17
CELKEM 1.NP		138,47
110	TERASA	30,65