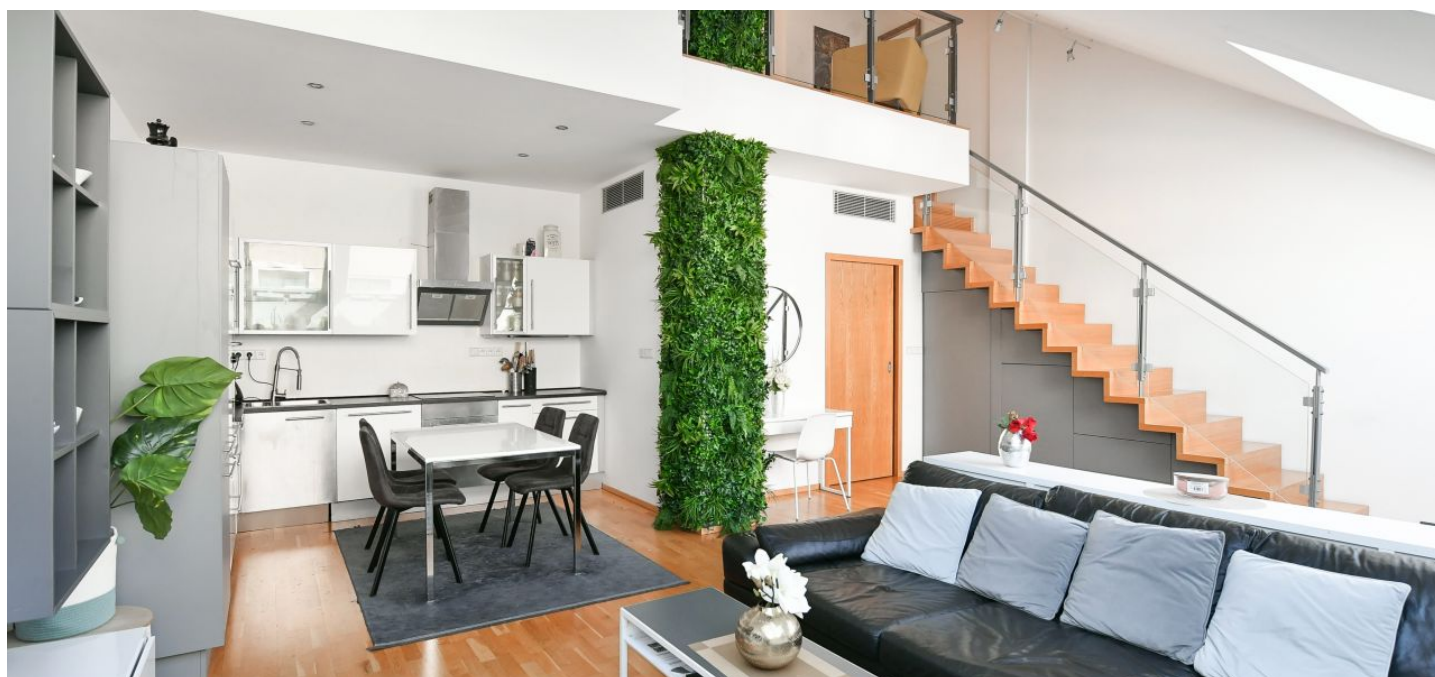




## Apartment Two-bedroom (3+kk)

€ 668 964 | CZK 16 500 000

112.43 m², Prague 10, Vinohrady, Korunní





# Apartment Two-bedroom (3+kk)

€ 668 964 | CZK 16 500 000

112.43 m², Prague 10, Vinohrady, Korunní

Total area	112 m²
Parking	Garage parking space for rent
Cellar	Yes
PENB	G
Reference number	105609

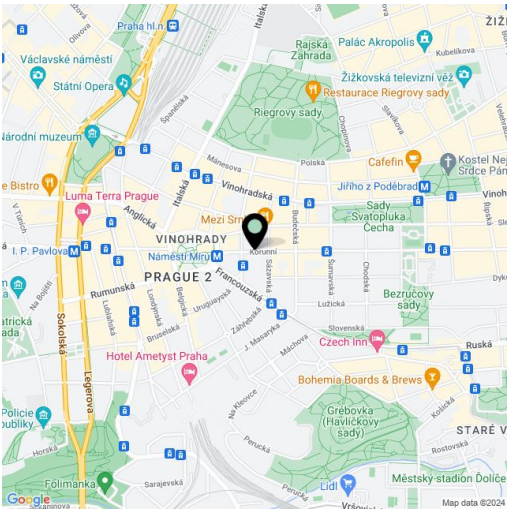
This air-conditioned duplex apartment on the 3rd and 4th floors of the modern project Korunní Dvůr by architect David Chisholm from CMC Architects is located in the sought-after district of Vinohrady, on the border of Prague 2 and Prague 10, with excellent access to the city center.

The lower floor of the bright apartment offers a spacious, interestingly designed living room with a kitchenette and dining area. High ceilings and skylights provide plenty of light and give the room a feeling of greater and more airy space. The hallway has a separate toilet. The staircase from the living room leads to the private part of the apartment, consisting of a main bathroom and two bedrooms, one with a study area.

The apartment is equipped with wooden parquet floors and new aluminum windows, air-conditioning, and shading by interior blinds. Heating is provided by floor convectors. The kitchen is fully equipped. The residence has a 24-hour reception with security. The apartment has a cellar, and a parking space in the garages can be rented.

The residence is situated on the border of a block of apartment buildings and a villa residential area with several architecturally important houses. In close proximity, there is a new architect-designed playground, preschools, and elementary schools, as well as numerous shops, stylish cafes, and restaurants, a brewery, a playground, or a pharmacy. A tram stop is right in front of the building, and by tram it takes three minutes to get to the Flora metro station (line A) and ten minutes to the center.

Floor area 112.43 m², cellar 3.33 m².



\* Area of the unit according to the Civil Code. The area consists of the sum total area of the entire unit bounded by perimeter walls.