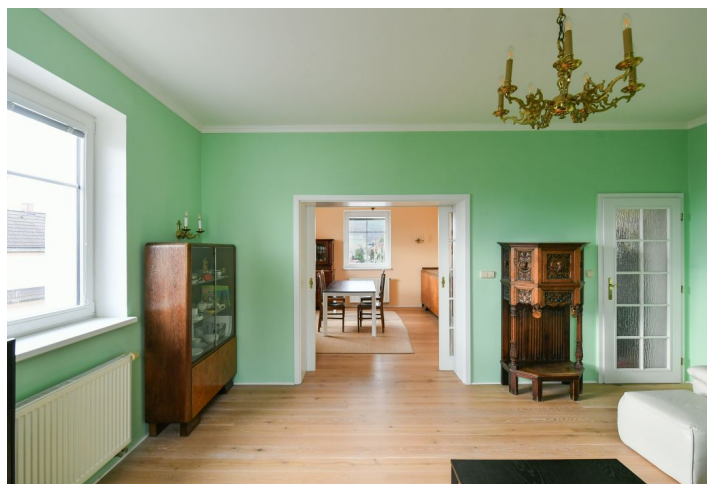
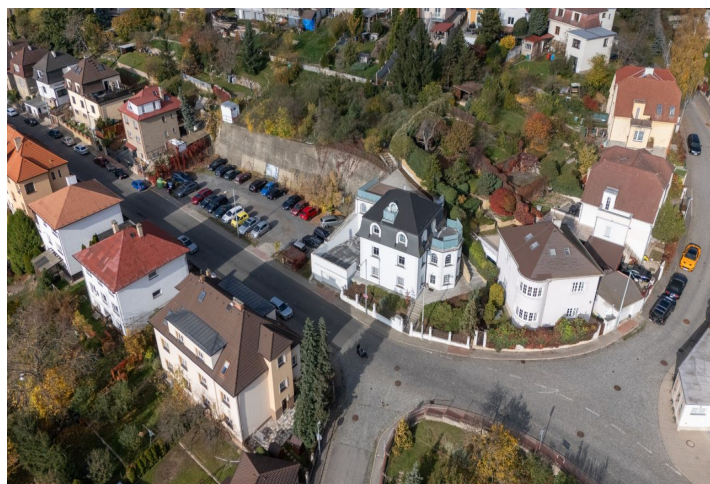




House Nine-bedroom (10+1)

€ 1 253 295 | CZK 30 900 000

460 m², Prague 5, Radotín, Ametystová



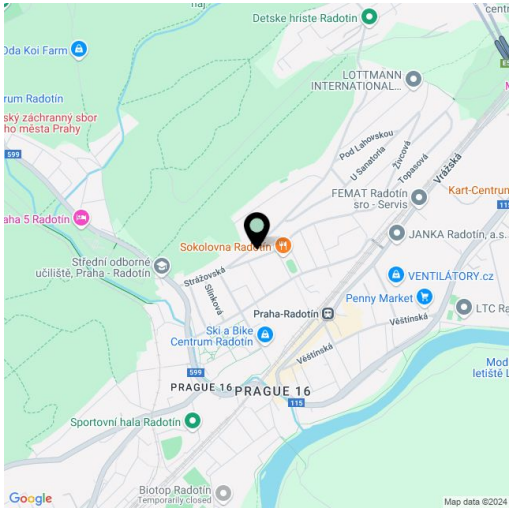


House Nine-bedroom (10+1)

€ 1 253 295 | CZK 30 900 000

460 m², Prague 5, Radotín, Ametystová

Total area	460 m²
Plot	479 m²
Floor area	360 m²
Terrace	100 m²
Parking	Double garage
Cellar	-
PENB	D
Reference number	106534



This 1930s multi-generational villa with terraces and beautiful views and a well-maintained ornamental garden is located in a quiet residential area on a sloping, south-facing plot in Prague 5 - Radotín, which lies between the Berounka River and the protected landscape area of the Czech Karst. The building is suitable as a family or corporate residence or as a guesthouse.

The house has a total of **13 rooms**, 4 bathrooms, and 2 kitchens (can also be built in the attic). The entrance level consists of 2 rooms, a hallway, a kitchen, a bathroom, and an entrance hall. From this level, a **southwest-facing terrace** is accessible. On the 1st floor is a living room, a dining room, a kitchen, a utility room/laundry room, 2 bathrooms (shower, toilet/bathtub, toilet), a room, and a room with a **fireplace** and a **preparation for a pool with views of the valley**. On the 2nd floor (**attic**) is a walk-through room, a bedroom, a bathroom (with a toilet and large shower), a hallway, and an **eastern terrace** and the rear **largest terrace** providing perfect privacy. The attic contains a **studio** with a **small roof terrace providing beautiful views of the wooded hills of the Central Bohemia Nature Park**.

The house has been **costly renovated** using **high-quality materials**, and has new windows (a combination of plastic and wooden) and new domestic networks. The kitchen is equipped with Bosch appliances. The main entrance door has **triple-glazed safety glass**, and all doors connecting the interior with the exterior are also security. The house is furnished with **stylish period furniture**. Heating is provided by a Buderus gas boiler (from 2020), and hot water by a heat pump (air-air, class A+). A **double garage** provides easy parking.

The **elegant villa** district is located high above the **Berounka River valley**, below the **Radotínské Rocks** natural monument. There is a kindergarten and a sports field nearby, an elementary school and high school in the district, as well as grocery stores, restaurants, a café, and a **cinema**. Excellent connections to the center are provided by buses and trains, and the train ride to the Smíchovské nádraží metro station takes 10 minutes. It is easy to connect to the Prague Ring Road by car.

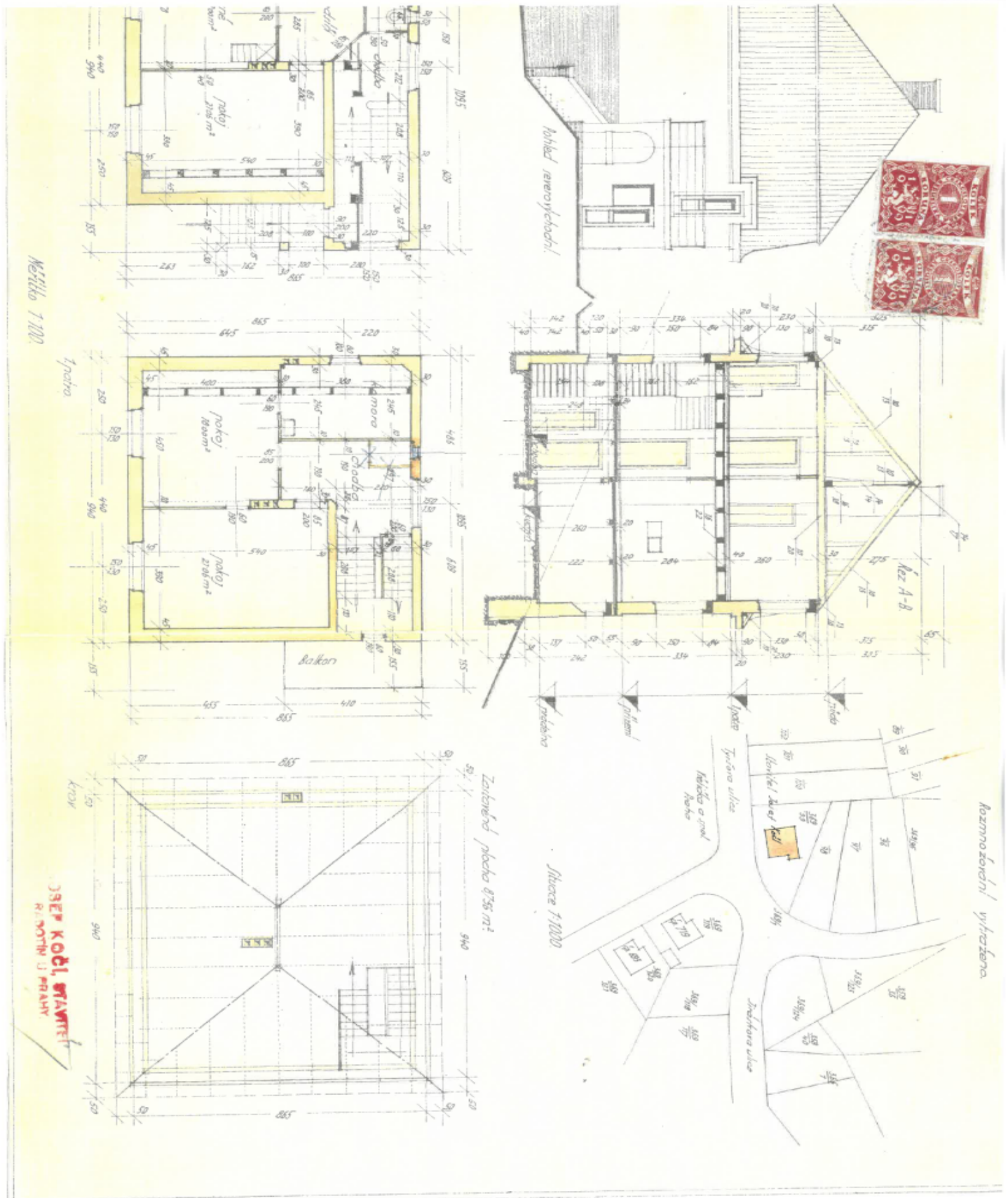
Total area 448 m² (of which living area 348 m², terraces 100 m²), built-up area 223 m², garden 214 m², plot 479 m².



House Nine-bedroom (10+1)

€ 1 253 295 | CZK 30 900 000

460 m², Prague 5, Radotín, Ametystová





House Nine-bedroom (10+1)

€ 1 253 295 | CZK 30 900 000

460 m², Prague 5, Radotín, Ametystová

