



## Apartment Two-bedroom (3+kk)

€ 818 323 | CZK 20 175 754

95.43 m², Brno-město, Pisárky, Nad Pisárkami





# Apartment Two-bedroom (3+kk)

€ 818 323 | CZK 20 175 754

95.43 m², Brno-město, Pisárky, Nad Pisárkami

Total area	95 m²
Front garden	25 m²
Parking	Possibility to purchase a parking space
Garage	Yes
Cellar	4 m²
PENB	B
Reference number	106638

This premium bright and spacious apartment with a front garden is part of the top-class Nová Myslivna residence with a reception, swimming pool, saunas, fitness zone, and rooftop restaurant. The project is located in a beautiful area in the middle of the forest park above Pisárky Valley.

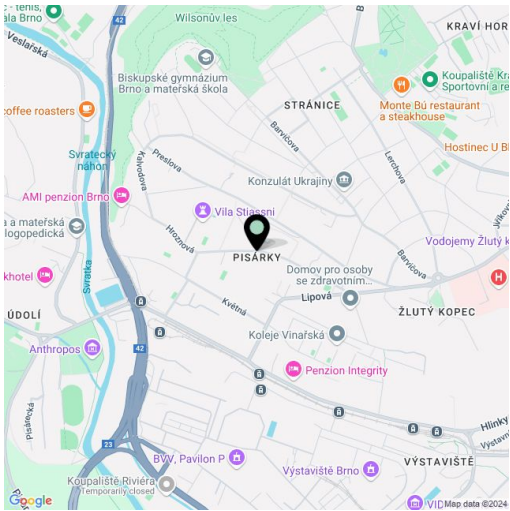
The layout of the apartment consists of a living room with a preparation for a kitchen and access to the **front garden**, a master bedroom, another bedroom, a bathroom, a separate toilet, **a walk-in wardrobe**, and a foyer.

The high-standard facilities include **wooden floors made of oiled oak**, 2.1 m high rebateless doors, aluminum windows with insulating triple glazing and electrically controlled **exterior blinds**, a premium **kitchen fully equipped with appliances**, large-format ceramic floor and wall tiles, brand-name sanitary ware and faucets, and **a smart home system** controlling, among other things, **cooling, and underfloor heating**. The purchase price includes **a cellar storage cubicle**. It is possible to purchase a **garage or outdoor parking space**. The building uses modern sustainable technologies to reduce energy consumption (heat pumps, photovoltaic panels). Other benefits include a daytime **reception, a relaxation zone with a swimming pool, several saunas and a gym**, a stroller room, or a room for washing bikes or dogs.

The apartment building will be surrounded by **greenery with water features and landscaping**, which will naturally connect to the surrounding forest, perfect for walks or bike rides. A restaurant with impressive views of the city and the wine-growing Pálava region, 50 kilometers away, is directly in the building. There is a bus stop not far from the house, from where you can reach the city center in about 15 minutes, **Campus Square shopping center** is about 5 minutes away by car or bus.

Floor area 95.43 m², balcony 25.09 m², cellar 3.67 m².

Excepted completion date is 4Q 2026.



\* Area of the unit according to the Civil Code. The area consists of the sum total area of the entire unit bounded by perimeter walls.



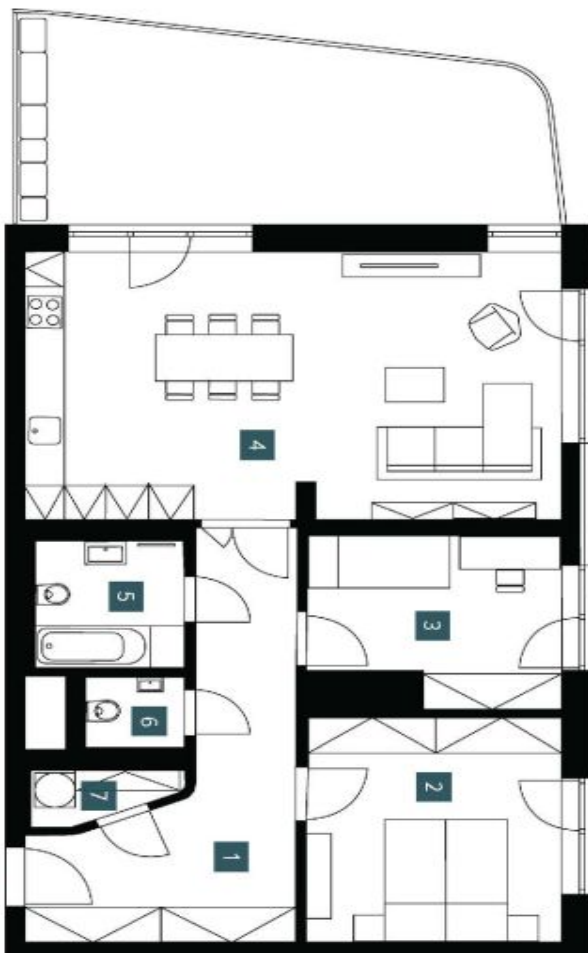
**€ 818 323 | CZK 20 175 754**

95.43 m<sup>2</sup>, Brno-město, Pisárky, Nad Pisárkami

2.1.02	
1. NP   3 + Kk	
ground fl. 2 bedm	
1 Prieďsiň	15,66 m <sup>2</sup>
2 Ložnice	14,38 m <sup>2</sup>
3 Pokoj	10,04 m <sup>2</sup>
4 Obyvacia pokoj + Kk	35,87 m <sup>2</sup>
5 Kuchynka + WC	4,75 m <sup>2</sup>
6 WC	1,75 m <sup>2</sup>
7 Šatňa	1,72 m <sup>2</sup>
Užitná plocha	84,17 m <sup>2</sup>
Podlahová plocha	95,43 m <sup>2</sup>
Predchádzka	25,09 m <sup>2</sup>
Celková plocha	120,52 m <sup>2</sup>

EXKLUZIVNI ZASTOUPENÍ

svobodafwilliams | CHRISTIE'S  
INTERNATIONAL REAL ESTATE



NOVÁ MYSLIVNÁ

Note: The status of a material from one to the other (i.e., from a liquid, solid, electrical conductor, etc.) is not provided. The delivery, design, specifications, and surface and dimensions are specified in the order of the customer to the manufacturer. Appropriate grades of material and minimum processing method are given.

