



Apartment One-bedroom (2+kk)

€ 540 549 | CZK 13 324 524

57.81 m², Brno-město, Pisárky, Nad Pisárkami





Apartment One-bedroom (2+kk)

€ 540 549 | CZK 13 324 524

57.81 m², Brno-město, Pisárky, Nad Pisárkami

Total area	81 m²
Floor area*	58 m²
Balcony	23 m²
Parking	Possibility to purchase a parking space
Garage	Yes
Cellar	2 m²
PENB	B
Reference number	106663

This southwest-facing apartment with a balcony and views of the Pálava wine-growing region is located on the 1st floor of the premium Nová Myslivna residence. This new building will become part of the forest park above Pisárky Valley, and the center of Brno will be only a few minutes' drive away. The residential project will offer its residents comfortable high-standard living, parking, a reception, a wellness and fitness zone, and a garden in the courtyard.

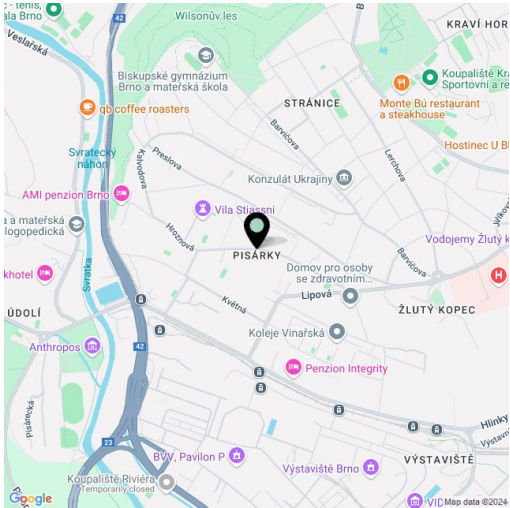
The layout consists of a living room with an adjoining kitchen, a bedroom, a bathroom (with a shower), a separate toilet, and an entrance hall. All rooms have access to the balcony with beautiful views.

The high-standard facilities include wooden floors made of oiled oak, 2.1 m high rebateless doors, aluminum windows with insulating triple glazing and electrically controlled exterior blinds, a premium kitchen fully equipped with appliances, large-format ceramic floor and wall tiles, brand-name sanitary ware and faucets, and a smart home system controlling, among other things, cooling, and underfloor heating. The purchase price includes a cellar storage cubicle. It is possible to purchase a garage or outdoor parking space. The building uses sustainable technologies to reduce energy consumption (heat pumps, photovoltaic panels). Other benefits include an elevator, daytime reception, a relaxation zone with a swimming pool, several saunas and a gym, a stroller room, or a room for washing bikes or dogs.

The apartment building will be surrounded by greenery with water features and landscaping, which will naturally connect to the surrounding forest. A restaurant with impressive views of the city and the wine-growing Pálava region, 50 kilometers away, is directly in the building. There is a bus stop not far from the house, from where you can reach the city center in about 15 minutes, Campus Square shopping center is about 5 minutes away by car or bus.

Floor area 57.81 m², balcony 22.73 m², cellar 1.61 m².

Excepted completion date is 4Q 2026.

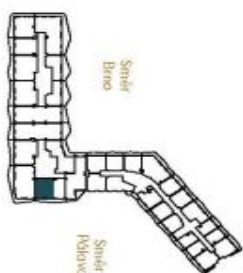
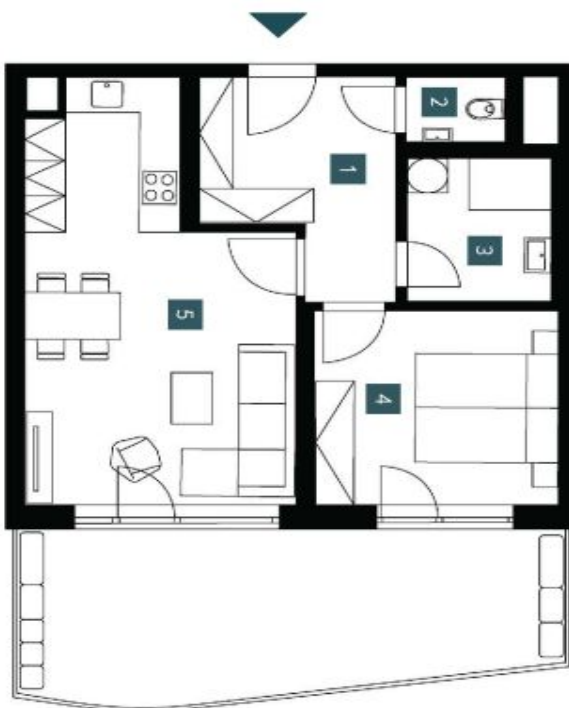


* Area of the unit according to the Civil Code. The area consists of the sum total area of the entire unit bounded by perimeter walls.

€ 540 549 | CZK 13 324 524

EXKLUZIVNÍ ZASTOUPENÍ
svobodafwilliams | CHRISTIE'S
INTERNATIONAL REAL ESTATE

2.2.18		
2. NP 2 + Kk		
1st floor	1 bedm	
1	Předsiň Hallway	8,99 m²
2	WC WC	1,54 m²
3	Koupelna Bathroom	5,18 m²
4	Ložnice Bedroom	11,86 m²
5	Obývací pokoj + Kk Living room + kitchen	24,17 m²
Užitná plocha Usable area		
		51,74 m²
Podlahová plocha Floor area		
		57,81 m²
Balkón Balcony		
		22,73 m²
Celková plocha Total area		80,54 m²



NOVÁ MYSLIVNA