



Apartment Two-bedroom (3+kk)

Sold

78.6 m², Prague 10, Strašnice





Apartment Two-bedroom (3+kk)

Sold

78.6 m², Prague 10, Strašnice

Total area	82 m²
Floor area*	79 m²
Balcony	3 m²
Parking	1 parking space on the property
Cellar	-
PENB	G
Reference number	106804

* Area of the unit according to the Civil Code. The area consists of the sum total area of the entire unit bounded by perimeter walls.

This bright apartment with a balcony is part of a small apartment building located in the traditional residential district of Prague 10 - Strašnice with a complete infrastructure and plenty of greenery.

The layout of the **1st floor** apartment consists of an entrance hall, a living room with a balcony and a preparation for a kitchen unit and access to a smaller bedroom, a larger bedroom facing a quiet courtyard, and a bathroom (shower, sink, toilet, washing machine connection).

The building and apartment are currently being renovated. Facilities include plastic windows with triple glazing, oiled oak floors, fire-resistant security entrance doors with noise insulation, interior doors, sink and toilet, cast marble bathtub of the same brand, and large-format floor and wall tiles. Heating throughout the apartment will be provided by **a condensing gas boiler**. The apartment comes with **a cellar**, and residents will have access to **a shared garden**. The brick building from the 1920s/1930s with 12 residential units has **no elevator**. **The apartment includes 1 parking space on the property.**

A convenient location on a side street near the Solidarita tram stop, about a 15-minute walk from the Strašnická metro station. There are restaurants, a post office, shops, and medical services in the area, and the district is made even more pleasant by the many green spaces in the gardens and landscaped parks.

Floor area 78.6 m², balcony 3.2 m², cellar 2.5 m².

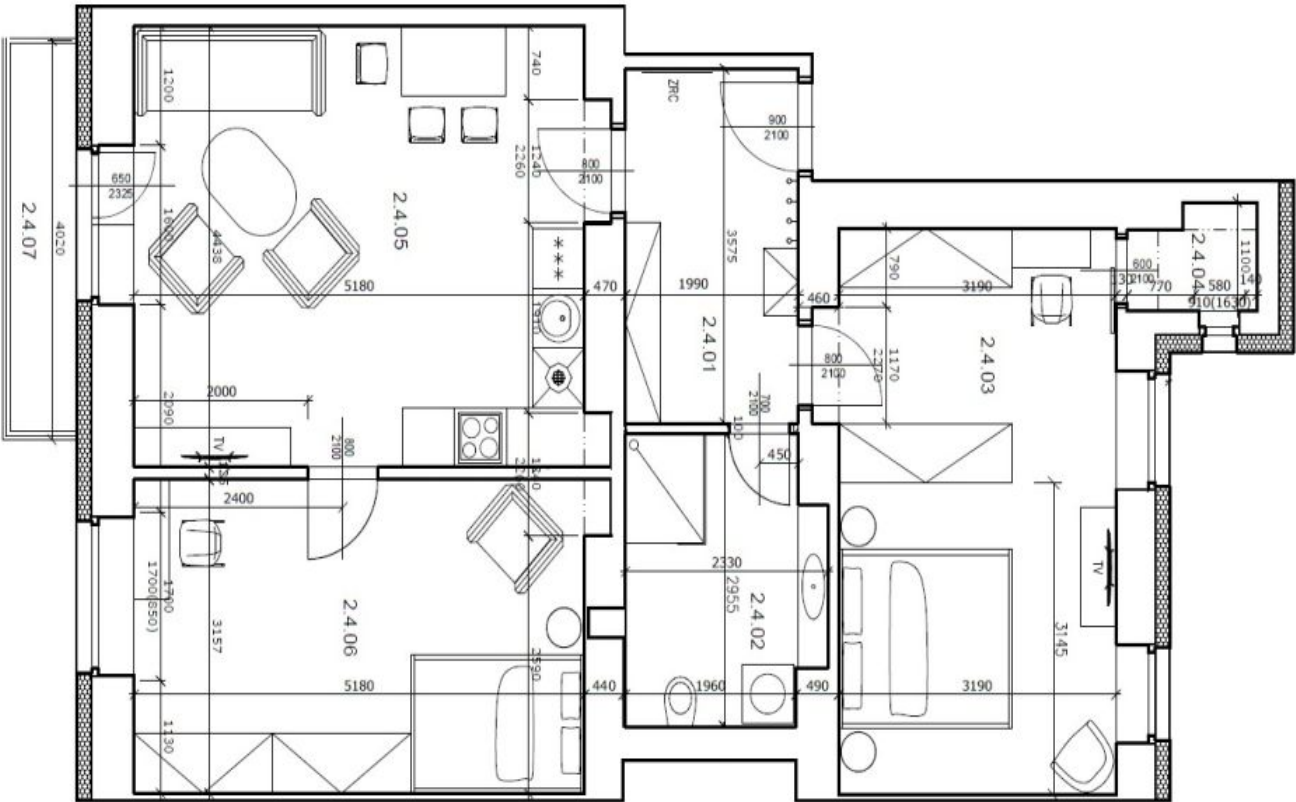
Completion expected in April 2025. Visualizations are for informational purposes only.



Apartment Two-bedroom (3+kk)

Sold

78.6 m², Prague 10, Strašnice



JEDNOTKA 887/4 - BYT		VÝMĚRA	SVĚTLÁ VÝŠKA
2.4.01	CHODBA	7.1	2700 mm
2.4.02	KOUPELNA + WC	6.4	2700 mm
2.4.03	LOŽNICE	18.2	2700 mm
2.4.04	KOMORA	1.5	2700 mm
2.4.05	OBÝVACÍ POKOJ + KK	23.2	2700 mm
2.4.06	LOŽNICE	16.5	2700 mm
CELKEM		72.9	M²

JEDNOTKA 887/6 - BYT		VÝMĚRA	SVĚTLÁ VÝŠKA
2.4.07	BALKON K JEDN. 887/4	3.0	-
CELKEM		3.0	M²