



Apartment One-bedroom (2+kk)

€ 425 990 | CZK 10 490 000

47.26 m², Prague 6, Vokovice, Africká





Apartment One-bedroom (2+kk)

€ 425 990 | CZK 10 490 000

47.26 m², Prague 6, Vokovice, Africká

Total area	58 m²
Floor area*	47 m²
Balcony	10 m²
Parking	Parking space in a car lift system
Cellar	3 m²
PENB	B
Reference number	107792

This new apartment with a balcony and parking is being developed in a small residential project set on a side street in Prague 6 – Vokovice, close to the metro and a vast nature park. The planned completion date is Q2 2026.

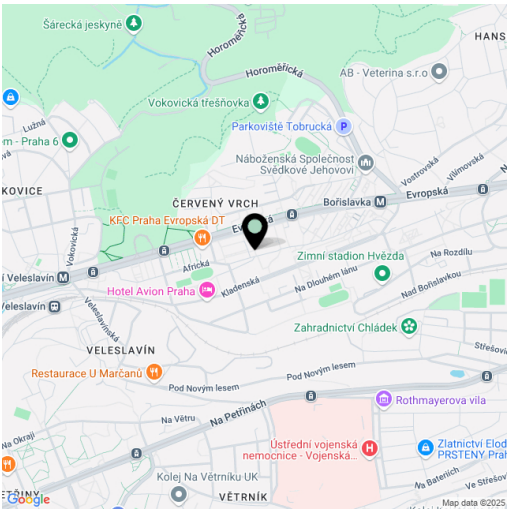
The layout of the apartment, located on the 3rd floor, consists of a living room with a kitchen preparation area, a bedroom, a bathroom (with a bathtub, toilet, sink, and washing machine connection), and an entry hall. The living room has access to a balcony.

Facilities include Solitaire Parket two-layer wooden floors, large-format tiles, NEXT Class III security fire-resistant entrance doors, plastic windows with insulated triple glazing and a preparation for exterior aluminum blinds, a video intercom, and a preparation for interior cooling units. The purchase price includes a cellar. The building, with an energy rating of B, will be equipped with an elevator.

The project is being developed in a prime location in Prague 6 – Vokovice, near the Nádraží Veveslavín public transport hub, which offers seamless transfers between the metro, trams, buses, trolleybuses, trains, and the future airport express train. The Prague Ring Road is easily accessible by car. Nearby, you will find preschools and primary schools, as well as a high school, Waldorf, and Montessori schools. Shops, including a supermarket, cafés, restaurants, and a pharmacy, are all within walking distance. The area is enhanced by green spaces with children's and workout playgrounds, and a short path leads to the Šárka nature park and the Džbán water reservoir.

Floor area 47.26 m², balcony 10.25 m², cellar 3.32 m².

* Area of the unit according to the Civil Code. The area consists of the sum total area of the entire unit bounded by perimeter walls.





Apartment One-bedroom (2+kk)

€ 425 990 | CZK 10 490 000

47.26 m², Prague 6, Vokovice, Africká

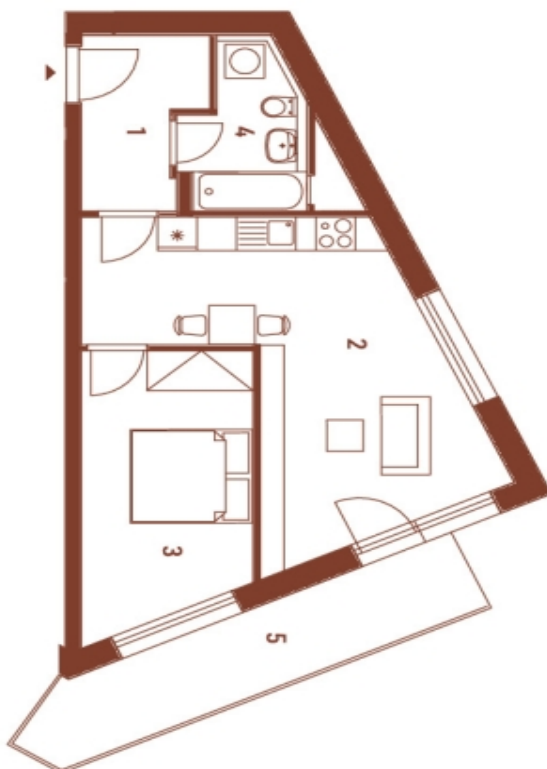
AFRICKÁ

Byt | Apt 4.5

4. NP 3rd floor	2+kk 1 bdrm
1 Chodba Hallway	4,41 m²
2 Obývací pokoj Living room	22,47 m²
3 Pokoj Room	12,29 m²
4 Koupelna Bathroom	4,83 m²
Užitná plocha Usable area	
Podlahová plocha Floor area	
44,00 m²	
47,26 m²	
5 Balkon Balcony	10,25 m²
Celková plocha Total area	
57,51 m²	

EXKLUZIVNÍ ZASTOUPENÍ
EXCLUSIVE REPRESENTATION

svoboda&williams | CHRISTIE'S
INTERNATIONAL REAL ESTATE



0,5 1,5 3m
M 1:75

Způsob výpočtu podlahové plochy je stanoven v souladu s nařízením vlády
č. 366/2013 Sb. Tento výkres byl zpracován pro marketingové účely.
Zobrazuje podrobný byt, včetně základního vybavení a spotřebičů, je pouze
ilustrativní. Vybavení a spotřebiče nejsou součástí prodeje. Prodávající si
vyhrazuje právo na případné změny.

