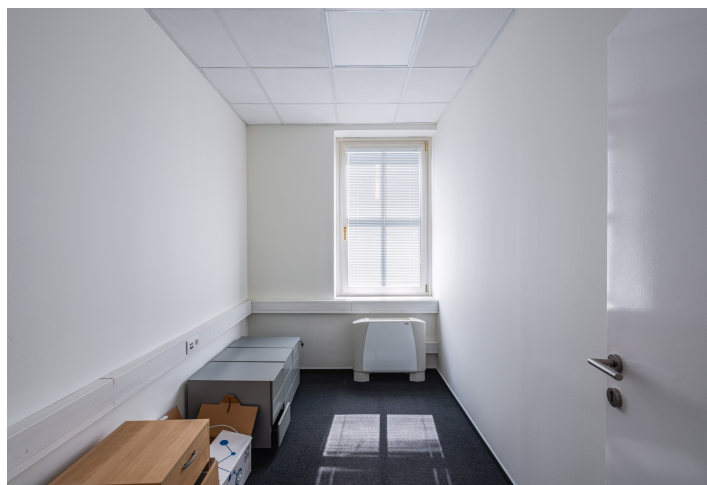
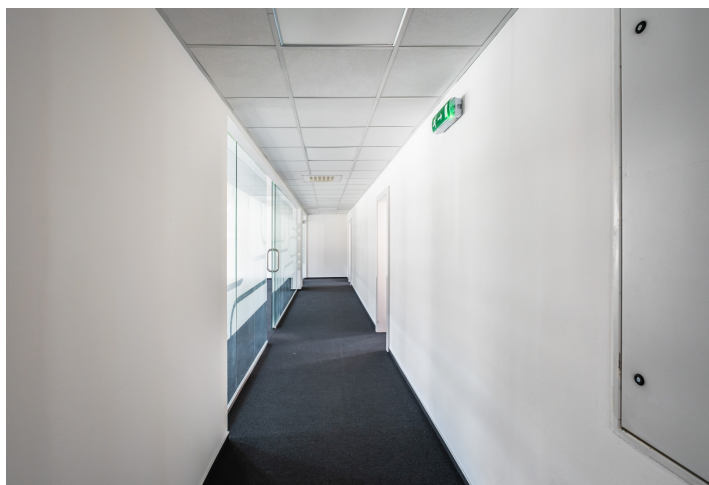




Office space

Bratislava I, Staré Mesto

€ 9.00 / m² | CZK 222 / m²





Office space

Bratislava I, Staré Mesto

€ 9.00 / m² | CZK 222 / m²

Service price	4 EUR monthly per m ²
Available area	239 m ²
Cellar	-
Parking	150 - 150 EUR
PENB	G
Reference number	108963

This spacious office space for rent with a total area of 239 m² is in a historic building directly on SNP Square, in the center of Bratislava's Old Town. The location is one of the best addresses in Bratislava and provides excellent civic amenities, a complete network of services, restaurants, banks, as well as excellent public transport accessibility - tram and bus stops are right in front of the building.

The office space is located on the **4th floor** of an elegant historical building. The layout is divided into several offices of different sizes, transition rooms, archives, corridors, a separate toilet, a shower, and a preparation for a kitchenette or other sanitary facilities. The **openable windows**, which provide natural ventilation as well as plenty of daylight, are a great advantage. Comfort is ensured by **air-conditioning**, heating via radiators, and the possibility of **parking** in the complex.

The premises are suitable for a wide range of uses - from corporate headquarters, a law or notary office, through coworking or a creative studio, to a training center, language school, or counseling or medical facility. Thanks to their variable layout, they can be adapted to the needs of the tenant.

The location offers exceptional advantages due to its central location and excellent accessibility. It is located in close proximity to the historic center, which ensures a high frequency of pedestrian visitors and good amenities. Excellent public transport links, and proximity to restaurants, cafes, and services make this location an attractive and practical place for business and everyday working life.

419	CHODRA (CHODRA)	51.60 m
420	GRY CHODRA WESTNOJ	11.60 m
421	ZADKOVA WESTNOJ	29.30 m
422	KANCEL JMA	30.30 m
423	CHODRA	310 m
424	STROVA	317 m
425	PRIDRA MLO	317 m
426	MC MLO	161 m
427	PRIDRA JAV	166 m
428	MC JAV	166 m
429	KANCEL JMA	166 m
430	KANCEL JMA	166 m
431	STROVA	317 m
432	CHODRA	310 m
433	CHODRA	310 m
434	CHODRA	310 m
435	CHODRA	310 m
436	CHODRA	310 m
437	CHODRA	310 m
438	CHODRA	310 m
439	CHODRA	310 m
440	CHODRA	310 m
441	CHODRA	310 m
442	CHODRA	310 m
443	CHODRA	310 m
444	CHODRA	310 m
445	CHODRA	310 m
446	CHODRA	310 m
447	CHODRA	310 m
448	CHODRA	310 m
449	CHODRA	310 m
450	CHODRA	310 m
451	CHODRA	310 m
452	CHODRA	310 m
453	CHODRA	310 m
454	CHODRA	310 m
455	CHODRA	310 m
456	CHODRA	310 m
457	CHODRA	310 m
458	CHODRA	310 m
459	CHODRA	310 m
460	CHODRA	310 m
461	CHODRA	310 m
462	CHODRA	310 m
463	CHODRA	310 m
464	CHODRA	310 m
465	CHODRA	310 m
466	CHODRA	310 m
467	CHODRA	310 m
468	CHODRA	310 m
469	CHODRA	310 m
470	CHODRA	310 m
471	CHODRA	310 m
472	CHODRA	310 m
473	CHODRA	310 m
474	CHODRA	310 m
475	CHODRA	310 m
476	CHODRA	310 m
477	CHODRA	310 m
478	CHODRA	310 m
479	CHODRA	310 m
480	CHODRA	310 m
481	CHODRA	310 m
482	CHODRA	310 m
483	CHODRA	310 m
484	CHODRA	310 m
485	CHODRA	310 m
486	CHODRA	310 m
487	CHODRA	310 m
488	CHODRA	310 m
489	CHODRA	310 m
490	CHODRA	310 m
491	CHODRA	310 m
492	CHODRA	310 m
493	CHODRA	310 m
494	CHODRA	310 m
495	CHODRA	310 m
496	CHODRA	310 m
497	CHODRA	310 m
498	CHODRA	310 m
499	CHODRA	310 m
500	CHODRA	310 m

POLYFUNKČNÝ OBJEKT	OBECNOSTI 2 811 35 694750,AM	MEZICA 1 500
	VÝMEROV, ING. APOLO LEPÁVA NECHOVÁ	PLATIA 12.07.2016
PÓDORYS ANP		ČÍSLO VÝKRESU 06