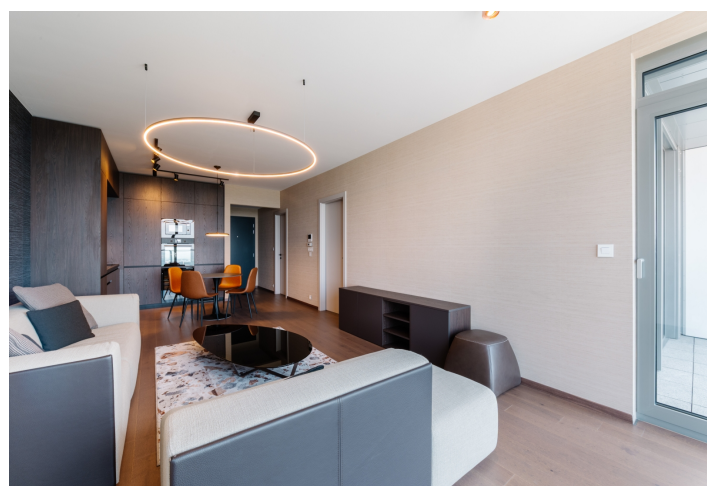
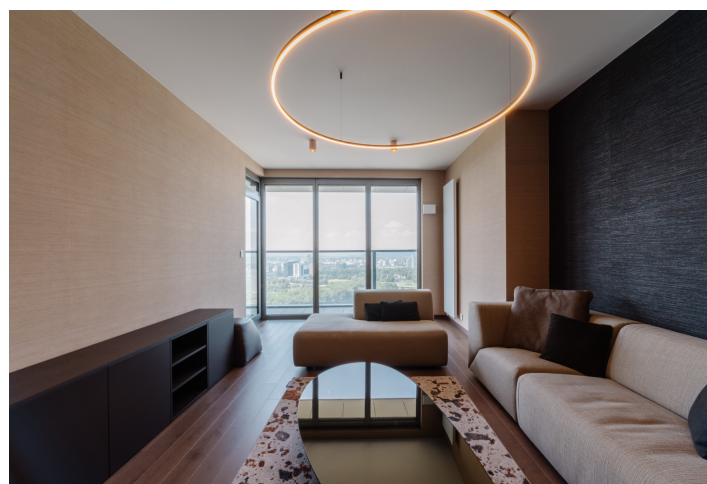




Apartment One-bedroom (2+kk)

€ 1 700 | CZK 41 361

58.65 m², Bratislava II, Ružinov, Pribinova





Apartment One-bedroom (2+kk)

€ 1 700 | CZK 41 361

58.65 m², Bratislava II, Ružinov, Pribinova

Total area	67 m²
Floor area*	59 m²
Loggia	9 m²
Parking	Parking space in the garage
Cellar	Yes
Service price	€350
PENB	A
Reference number	109621
Available from	Immediately

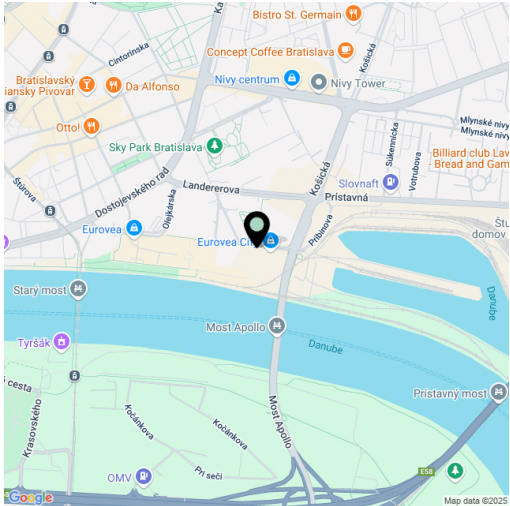
This designer one-bedroom apartment with views of the Danube River and Bratislava Castle is located on the 31st floor of the highest residential building in Slovakia—Eurovea Tower. It offers superior living for a demanding client looking for comfort, design, and a prestigious address in the center of Bratislava. Located right on the Danube riverbank, in the heart of Bratislava's downtown, with complete civic amenities within the Eurovea mall - shops, cafes, restaurants, fitness centers, a cinema, and a promenade.

The apartment has a **loggia** facing southeast and consists of a spacious living room connected to the kitchen and dining area, a bedroom with a built-in **wardrobe** and access to the loggia, a bathroom with a bathtub, walk-in shower, and toilet, and an entrance hall with a spacious **walk-in closet**. The apartment comes with a **cellar storage unit** and a **parking space**.

The interior is furnished with high-quality materials and designer elements, a customized kitchen with complete built-in appliances including a **wine fridge**, washer, and dryer, a **Rolf Benz** sofa, individual heating control, aluminum windows with triple glazing and **electric screen blinds**, a **built-in sound system** in the bathroom with a Bluetooth connection, a security entrance door, a video doorman, and a **24/7 reception**.

If the tenant so desires, **air-conditioning**, a TV, curtains, and possibly a work corner will be added to the apartment.

Monthly rent EUR 1,700 + EUR 150 for a parking space + EUR 350 deposit for utilities and services.



* Area of the unit according to the Civil Code. The area consists of the sum total area of the entire unit bounded by perimeter walls.