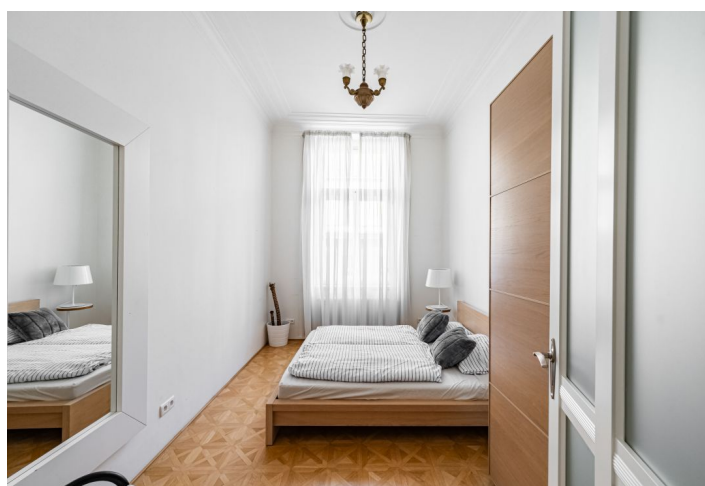




## Apartment Three-bedroom (4+kk)

Ask for price

147 m<sup>2</sup>, Prague 1, Josefov





## Apartment Three-bedroom (4+kk)

[Ask for price](#)147 m<sup>2</sup>, Prague 1, Josefov

Total area	147 m <sup>2</sup>
Parking	-
Cellar	-
PENB	G
Reference number	13514

\* Area of the unit according to the Civil Code. The area consists of the sum total area of the entire unit bounded by perimeter walls.

**This bright, stylish apartment with two beautiful bay windows on the 3rd floor of an Art Nouveau corner building in the heart of historic Prague is only steps away from Old Town Square and the Old-New Synagogue.**

The interior comprises a living room, a fully-fitted kitchen with a dining area, 3 bedrooms, 2 bathrooms, and built-in closets. The apartment is distinguished by a high standard design and finishings—**oak floors in a Viennese cross pattern, marble** in the hall and in the bathrooms, **refurbished windows, stucco ceilings, and original Art Nouveau chandeliers**. Video security system, alarm, security entrance doors, 2 small safes in the living room.

The apartment is located in the prestigious location of Josefov, just around the corner from the luxurious boutiques on Pařížská Street, within reach of many restaurants, cafés, galleries, and shops.

Floor area 146.9 m<sup>2</sup>.

The property is now rented until 5/2025.