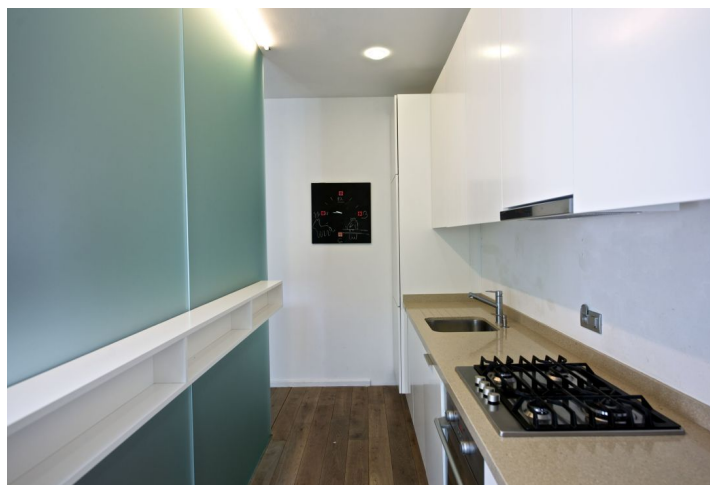
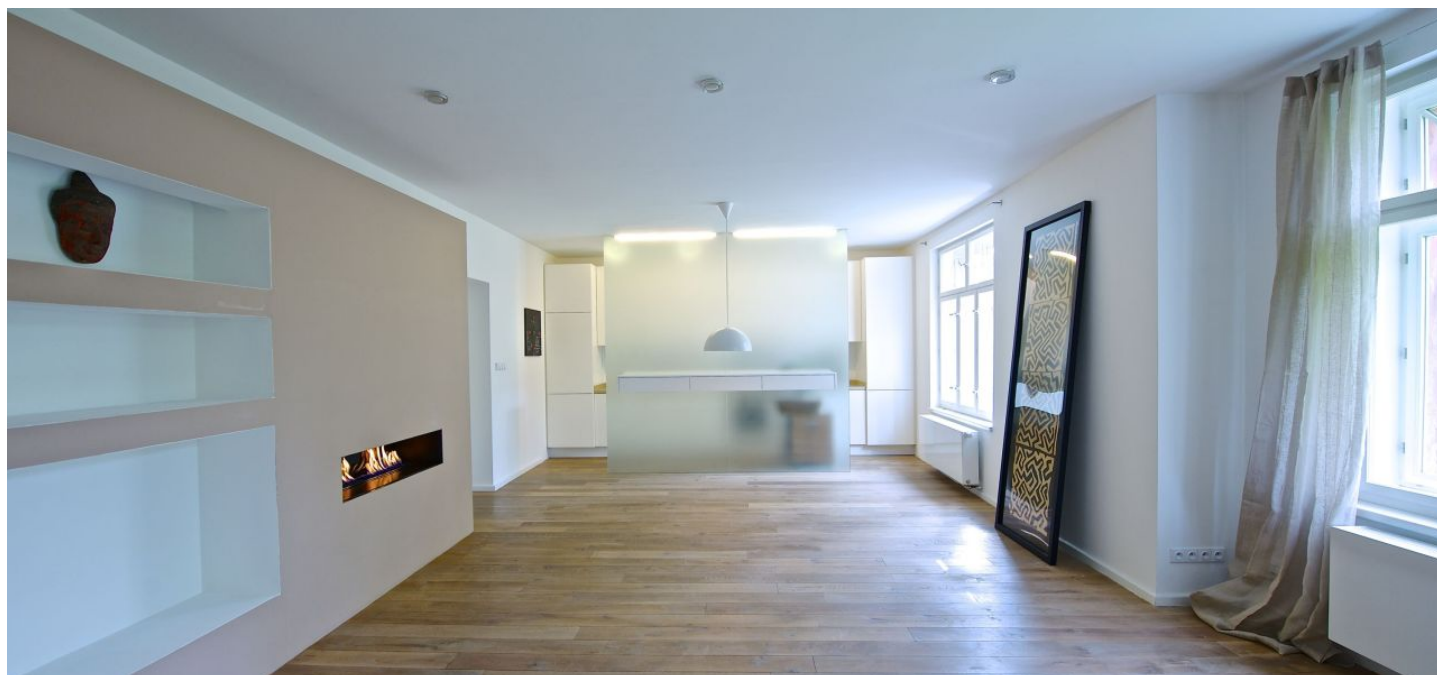




Apartment Two-bedroom (3+kk)

Rented

108 m², Prague 6, Střešovice, Lomená





Apartment Two-bedroom (3+kk)

Rented

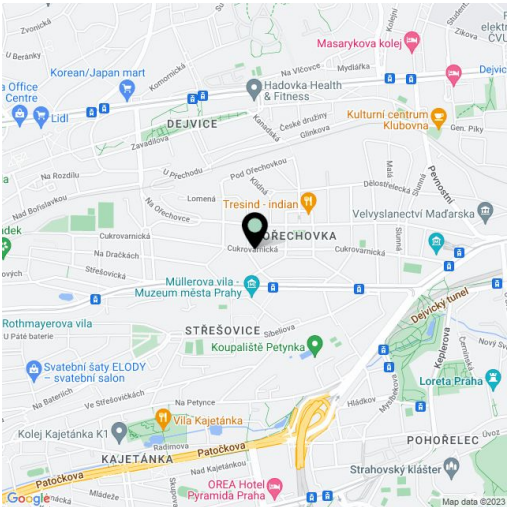
108 m², Prague 6, Střešovice, Lomená

Total area	108 m²
Parking	-
Cellar	Yes
PENB	G
Reference number	15365
Available from	Immediately

This fully reconstructed 2-bedroom flat is available for rent. Designed by a leading Czech architectural studio, the flat is situated on the first floor of a renovated villa with a garden in a quiet cul-de-sac in a prestigious Prague 6 neighborhood. Wonderful location with grand homes and lots of greenery, just minutes from a tram and bus stop, a few stops from Dejvická and Hradčanská metro station, within easy reach of the airport and international schools.

The interior includes a large living room with a gas fireplace and a fully fitted open plan kitchen, two bedrooms with a shared bathroom (bath tub, walk-in shower, sink, bidet, toilet), laundry/utility room, guest toilet, and entry hall with a clothes closet.

Wood floors, heated tiles in the bathroom, washing machine, audio entry phone, shared garden. Easy parking on the street. Utilities will be transferred to the tenant. Available immediately.



* Area of the unit according to the Civil Code. The area consists of the sum total area of the entire unit bounded by perimeter walls.