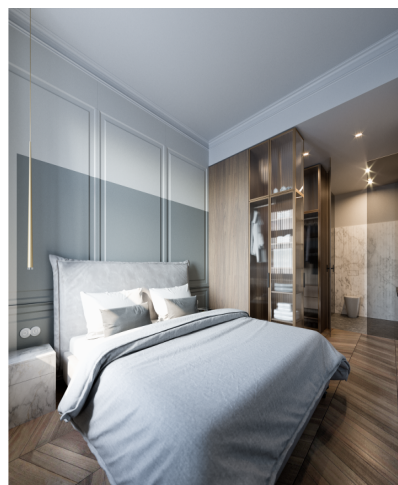




Apartment Three-bedroom (4+kk)

Ask for price

108 m², Prague 3, Vinohrady, Slavíkova





Apartment Three-bedroom (4+kk)

Ask for price

108 m², Prague 3, Vinohrady, Slavíkova

Total area	116 m ²
Floor area*	108 m ²
Balcony	8 m ²
Parking	-
Cellar	Yes
PENB	G
Reference number	27142

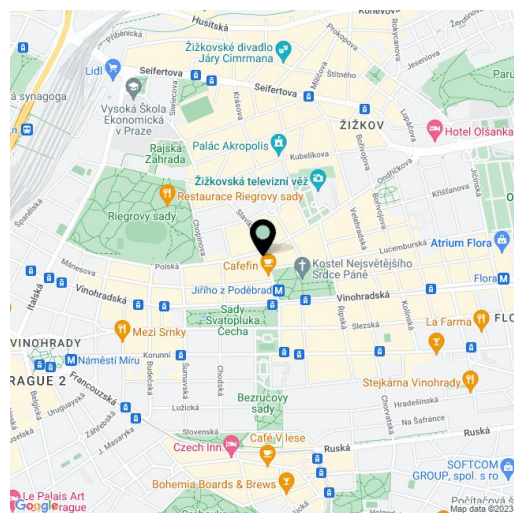
This apartment with two balconies is located on the 2nd floor of a boutique residential project, consisting of the reconstruction of a 19th-century apartment building. In an attractive residential area of Vinohrady just a few steps from Riegrový Sady Park, Jiřího z Poděbrad Square, or the Žižkov TV Tower. Completion is scheduled for September 2019.

The layout offers a living room with a dining area and an open plan kitchen with access to a **southwest-facing balcony**, a study, 2 bedrooms (1 with an en-suite bathroom and an access to the balcony) with windows facing the courtyard, a bathroom, a guest toilet, an entrance hall, and a closet.

The apartment is offered in a completely finished state with the option of white walls finishing (i.e. before the completion of the final surfaces - floors, tiles). Facilities include **oak floors**, large-format tiles, high quality sanitary ware, **cassette interior doors** and **replicas of casement windows**, double-wing entrance doors with period mouldings, data distribution, a home phone, and a preparation for a satellite TV. Heating will be provided by a central boiler room in the basement. The purchase price includes a **cellar**.

The sought-after location provides all civic amenities and **easy access to the center** thanks to the close proximity of a tram stop and the Jiřího z Poděbrad metro station (line A). Within walking distance, there are both kindergartens and elementary schools, high schools, shops, cafes, and restaurants, the Akropolis Palace, **Mahlerovy Sady** Garden with the Žižkov TV Tower and the Sokol Královské Vinohrady swimming pool in **Riegrový Sady Park**.

Interior 108.8 m², balcony 4.6 m² and 2.8 m², cellar.



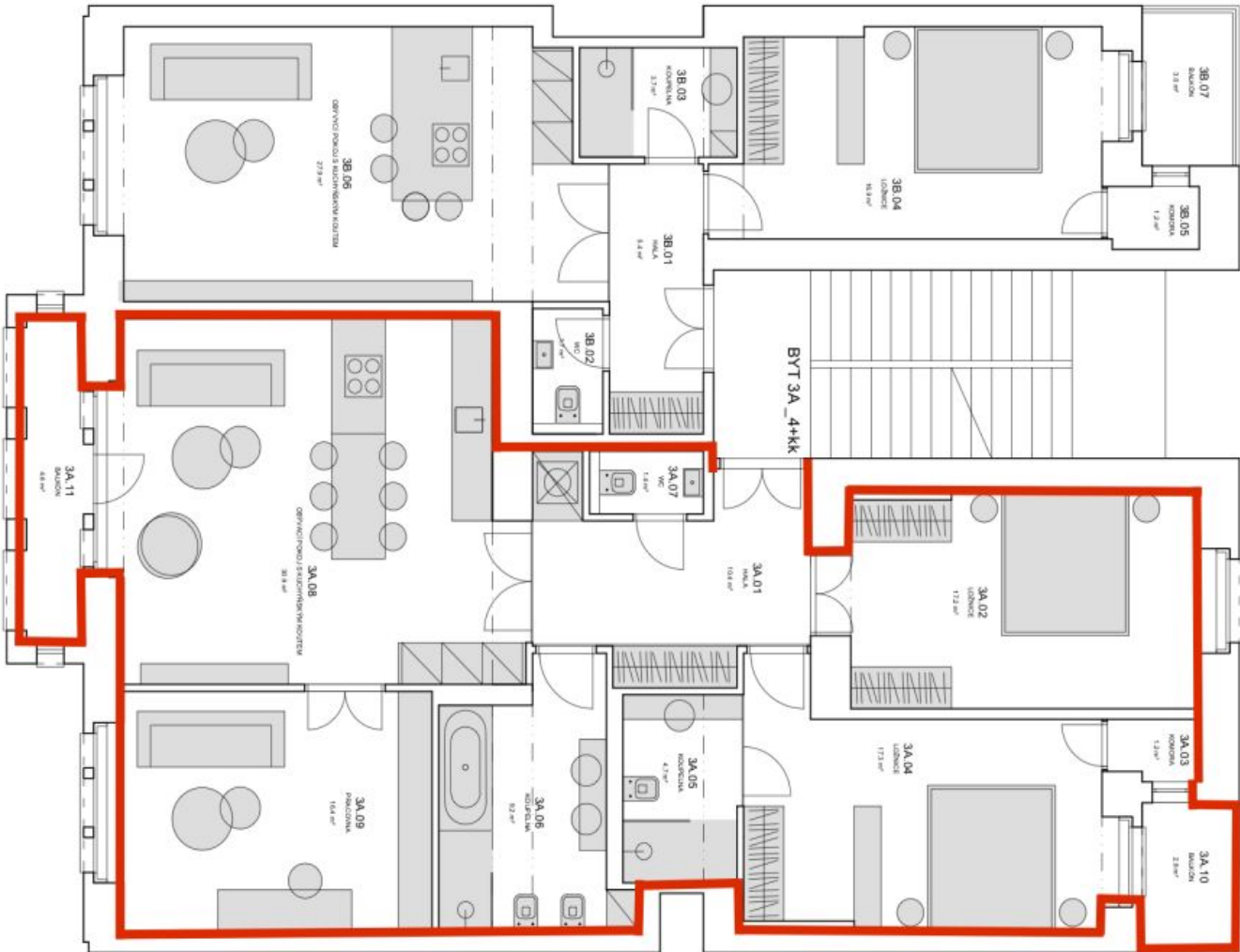
* Area of the unit according to the Civil Code. The area consists of the sum total area of the entire unit bounded by perimeter walls.



Apartment Three-bedroom (4+kk)

Ask for price

108 m², Prague 3, Vinohrady, Slavíkova



BYT 3A_4+kk		
TABULKA MĚSTNOSTI		
Č. M.	MĚSTNOST	PLOCHA m²
3A.01	HOLLA	10.4
3A.02	LOŽNICE	17.2
3A.03	KOCHENKA	1.3
3A.04	LOŽNICE	17.3
3A.05	KOCHENKA	4.7
3A.06	KOCHENKA	9.2
3A.07	WC	1.4
3A.08	GERMÁNÍ PRONÍKÁ A KUCHENSKÝM	30.9
3A.09	PRACOVNA	18.4
CELKEM		114.8
3A.10	BALCON	2.8
3A.11	BALCON	4.5