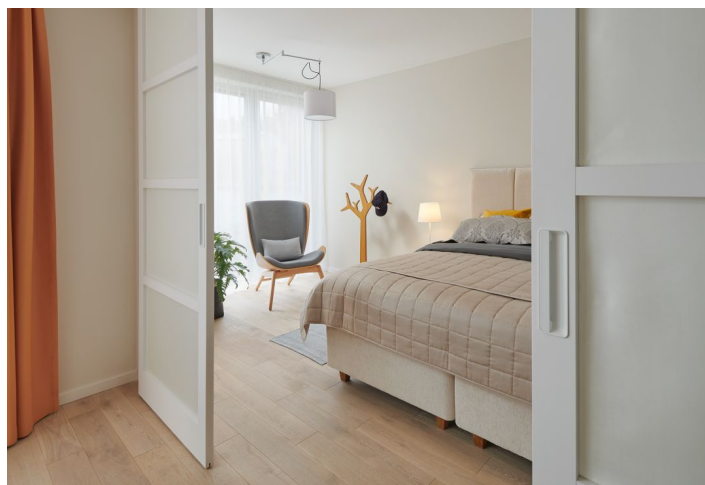
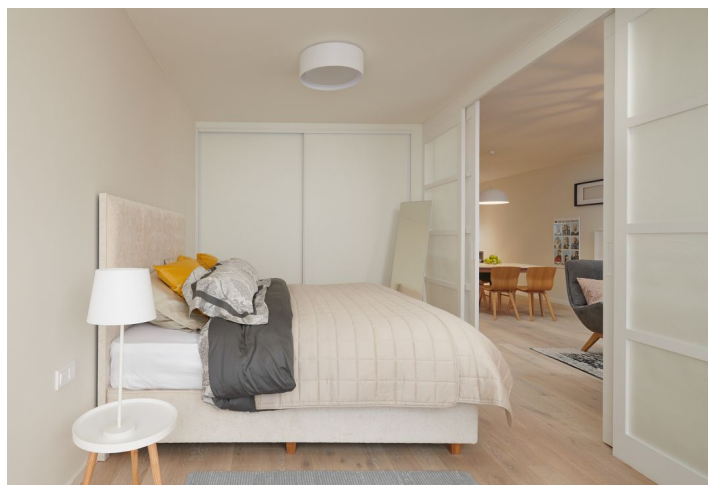




Apartment One-bedroom (2+kk)

Sold

80 m², Prague 4, Hodkovičky, Na Lysinách





Apartment One-bedroom (2+kk)

Sold

80 m², Prague 4, Hodkovičky, Na Lysinách

Total area	80 m²
Parking	450 000
Cellar	Yes
PENB	B
Reference number	29595

Newly built airy and bright apartment with a minimalist interior design, part of the Vila Hodkovičky boutique project, situated in a quiet residential area with a pleasant atmosphere. Completion scheduled for February 2019.

The layout of the apartment on the 1st floor features a generous southwest-facing living space with an open plan kitchen, the possibility of creating a bedroom, a study, a bathroom, a hall, and a utility room.

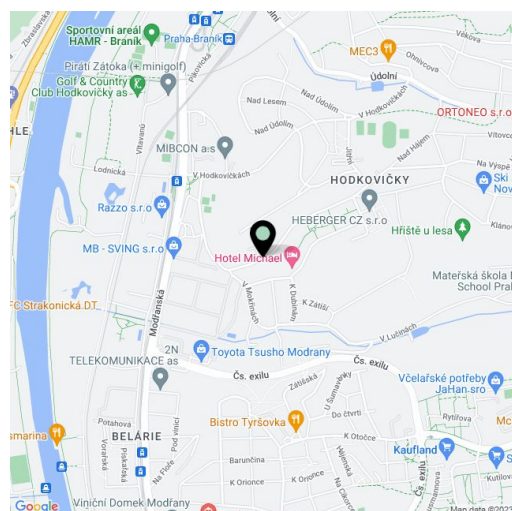
The interior will include triple glazed **floor-to-ceiling wooden windows**, bathrooms with large-format tiles, Durstone mosaic tiles, Hüppe, Laufen, and Grohe sanitary ware, **underfloor heating**, Sapeli interior doors, and security entrance doors. **Currently, the client can select fittings and appliance, and customize the layout.** The apartment comes with a cellar unit and there is a practical washroom for bicycles and dogs in the building. The price of the apartment includes a kitchen, built-in wardrobes, lights, and curtains. A parking space is available at an additional cost.

The villa is located in a quiet area of Prague, surrounded by dense greenery. A popular **cycling trail** along the Vltava River is close-by. Other fitness opportunities include a nearby sports center and a **golf club**. A large shopping center is within short driving distance. From the tram stop just a few minutes' walk from the villa it is a **20-minute ride to Wenceslas Square**. A bus stop and the Prague Braník train station with fast and direct connections to the **Main Railway Station** can easily be reached on foot. The Barrandov Bridge and the Prague Ring Road are easily accessible by car.

* Area of the unit according to the Civil Code. The area consists of the sum total area of the entire unit bounded by perimeter walls.

Usable area 80.26 m².

More information about the project: www.vilahodkovicky.cz.

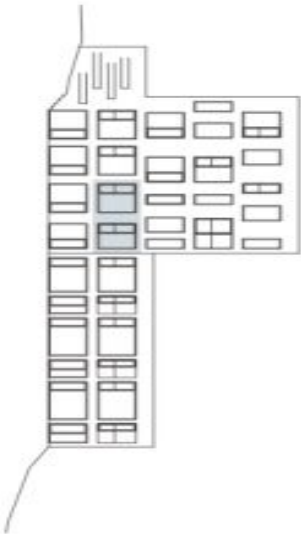




Apartment One-bedroom (2+kk)

Sold

80 m², Prague 4, Hodkovičky, Na Lysinách



č.	Přibližné rozměry místností	m²
1	obývací pokoj + kk	53,01
2	koupelna	4,50
3	chodba	5,62
4	komora	2,93
5	pracovna	11,98
Plocha bytu dle NOZ		83,42