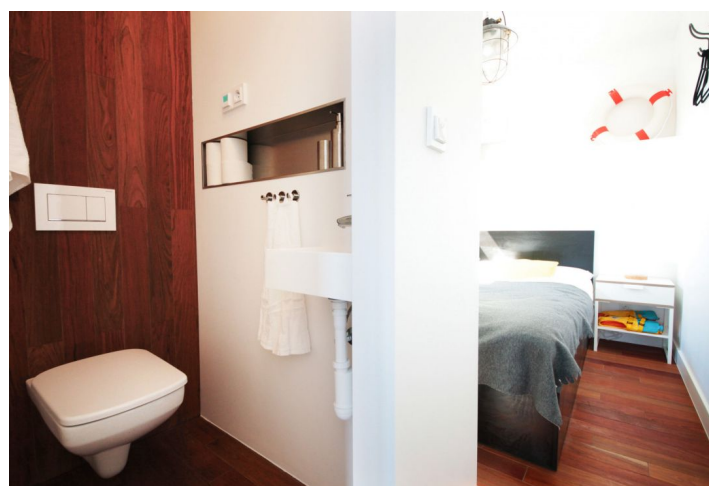
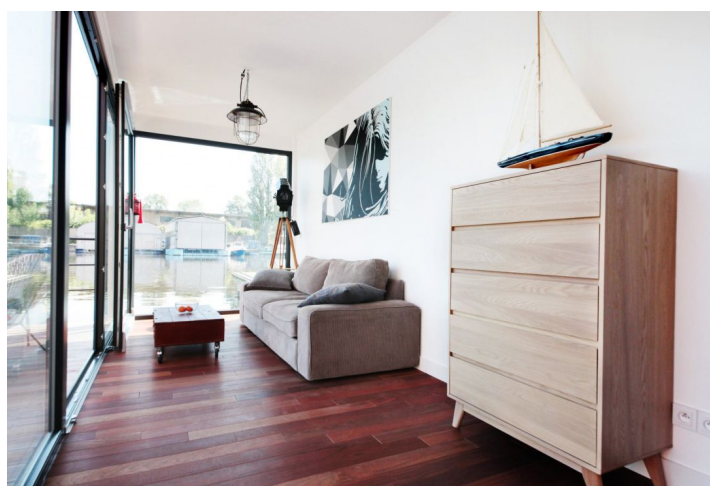




## Apartment One-bedroom (2+kk)

**Sold**

36 m², Prague 7, Holešovice, V Přístavu





## Apartment One-bedroom (2+kk)

**Sold**

36 m², Prague 7, Holešovice, V Přístavu

Total area	66 m²
Floor area*	36 m²
Terrace	30 m²
Parking	2 outdoor parking places
Cellar	-
Service price	3 600 CZK monthly
PENB	G
Reference number	31770

Ideal living for romantic souls or an interesting investment opportunity.

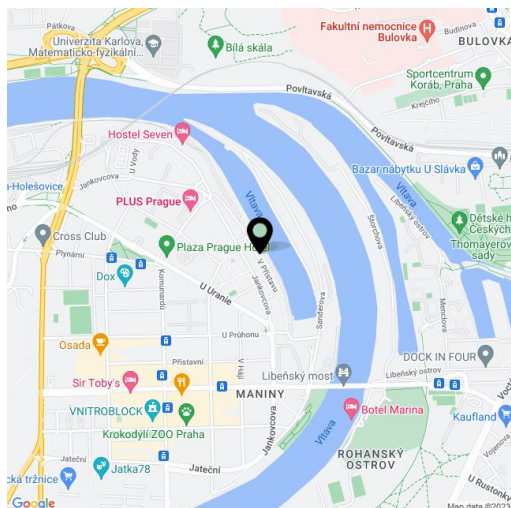
This houseboat is anchored in a safe blind arm of the Vltava River near the Prague Marina project in a location with complete services and excellent connections to the city center.

The layout features a living room with a kitchen and access to the terrace, a bedroom, and a bathroom.

In the houseboat, space is fully maximized. It is connected to water and electricity; there is a **water well** with a purifier. Facilities include **wooden floors**, large-format aluminum windows, and a basic kitchen. There are **2 parking cards** available for parking directly above the houseboat.

The location has perfect civic amenities and fast connections to the center by car and public transport. The houseboat is anchored near a tram stop with links to the Palmovka, Vltavská, and Nádraží Holešovice metro stations. There are many restaurants, bistros, cafes, and shops nearby. The place offers plenty of active leisure opportunities; it is close to a **golf club** and a **bike trail**.

Interior 36 m², terrace about 30 m².



\* Area of the unit according to the Civil Code. The area consists of the sum total area of the entire unit bounded by perimeter walls.