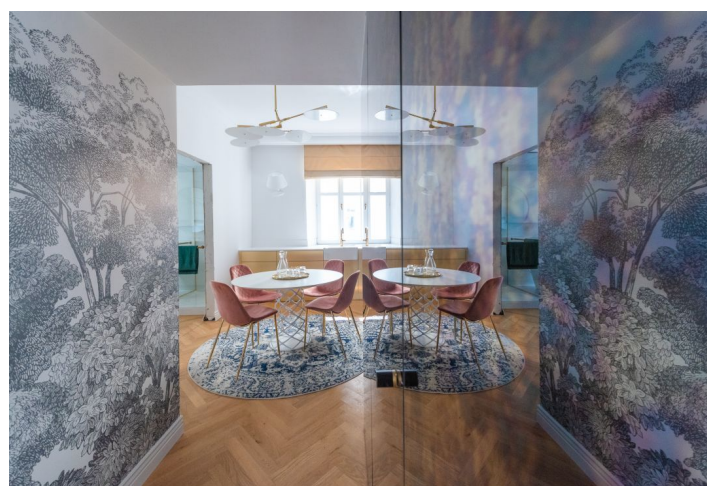
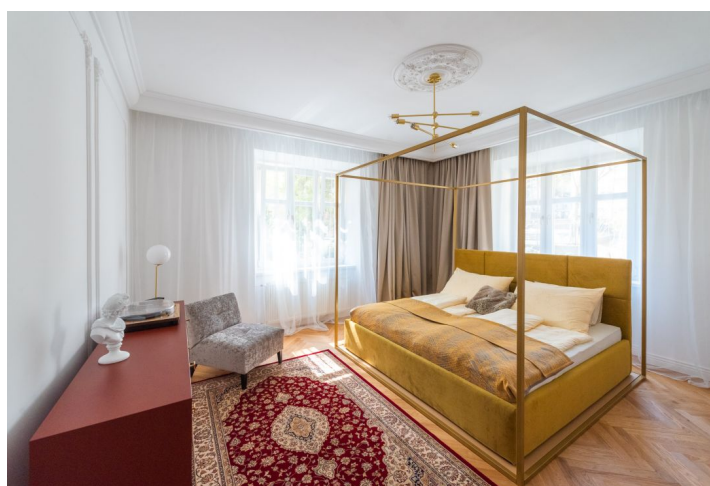




Apartment Two-bedroom (3+kk)

Rented

110 m², Bratislava I, Staré Mesto, Palisády





Apartment Two-bedroom (3+kk)

Rented

110 m², Bratislava I, Staré Mesto, Palisády

Total area	111 m²
Floor area*	110 m²
Balcony	1 m²
Parking	Yes
Garage	Yes
Cellar	Yes
Service price	250 EUR Monthly
PENB	G
Reference number	32284
Available from	Immediately

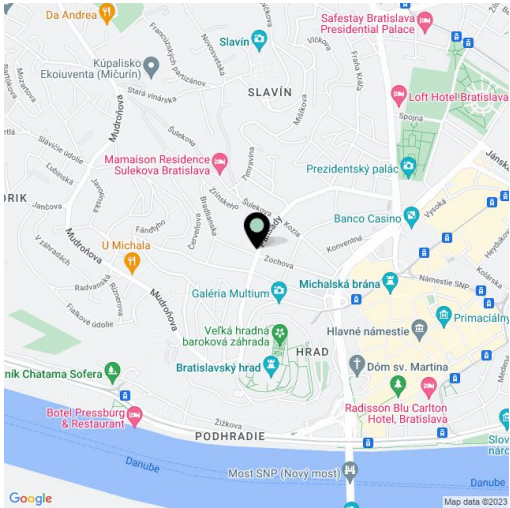
This furnished, designer, generously apportioned 2-bedroom apartment in an Art Deco style with preserved historical features in a quiet part of Palisády comes with stylish premium facilities, a balcony, and air-conditioning. Situated in a sought-after location close to the historic city center in a fully reconstructed brick building from 1946.

The layout of this apartment on the first floor begins with an entrance hall, followed by a **living room with a lit alcove overlooking the garden**. On the left side of the hall, there is a smaller bedroom with access to the **balcony** and the **main bedroom**, which faces two different directions. On the right side of the hall with built-in **air-conditioning**, there is a glass wall that hides a **wardrobe** and a utility space with a shoe cabinet. There is also a separate toilet with a sink for guests. At the end of the hallway, there is a kitchen connected to the dining room and double-wing doors that lead to a **sunny bathroom with a walk-in shower, a freestanding bathtub**, a cabinet with a designer sink, a bidet, and a toilet.

The interior features high quality **wooden parquet floors, cassette doors, silk wallpaper**, and decorative stucco walls throughout; the original period ceiling stucco was restored. Facilities include hand-woven **silk carpets, original designer light fixtures**, and accessories. There is also a spacious brick **cellar storage unit** below the apartment and it is possible to rent a parking space in the garage.

Interior 110 m², balcony 1 m², cellar 23 m²

Rent EUR 1,550 per month + EUR 250 utilities



* Area of the unit according to the Civil Code. The area consists of the sum total area of the entire unit bounded by perimeter walls.