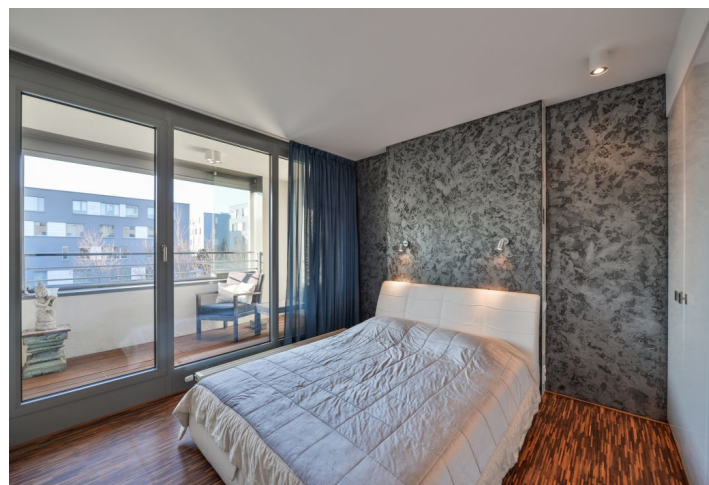
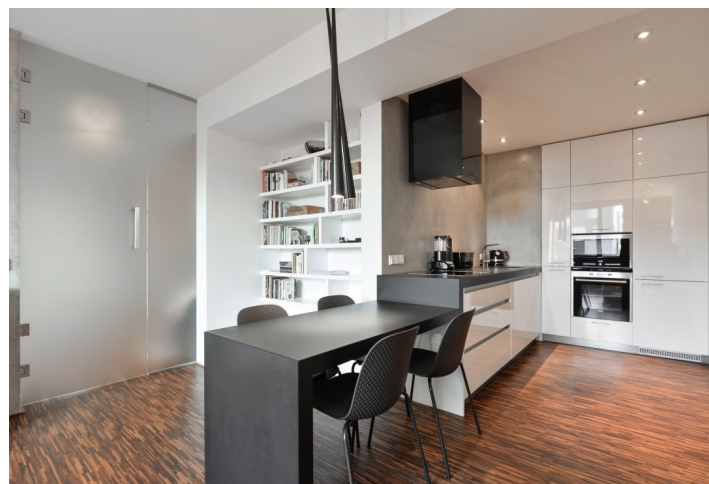




## Apartment Two-bedroom (3+kk)

**Sold**

84 m², Prague 9, Prosek, Na Prosecké vyhlídce



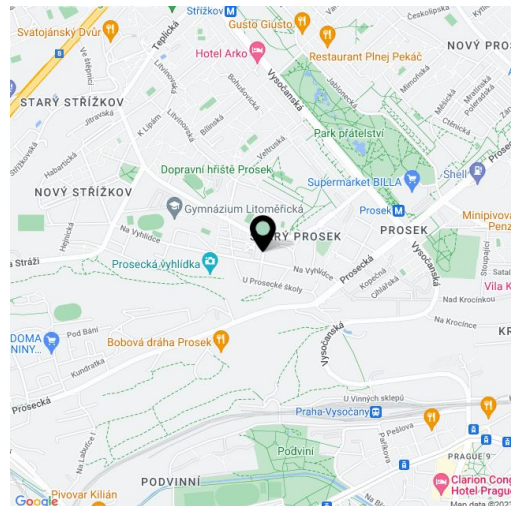


## Apartment Two-bedroom (3+kk)

**Sold**

84 m², Prague 9, Prosek, Na Prosecké vyhlídce

Total area	88 m²
Floor area*	84 m²
Balcony	4 m²
Parking	300 000
Garage	Yes
Cellar	-
Service price	3 500 CZK monthly
PENB	C
Reference number	33825



This modern apartment with a loggia, views of a quiet park, a designer interior from the renowned OOOOX studio, and a garage parking space is part of a residential complex with an elevator located on a side street near the Prosek Rocks Natural Monument and the Prosek metro station.

The apartment on the 1st floor consists of a living room with a dining area and a partially separate kitchen, a master bedroom with a west-facing balcony, a second (smaller) bedroom, a spacious entrance hall with a library, a dressing room with storage space and a connection for a washing machine, a bathroom (with a bathtub and a **walk-in shower**), and a guest toilet.

The interior with a fresh design was created in 2009 by the OOOOX studio. The facilities include aluminum windows with electrically operated **exterior blinds**, wooden floors, a complete kitchen with **Siemens** appliances, built-in wardrobes in the bedroom, a sliding glazed wall in the loggia, and security equipment. The unit comes with **1 garage parking space**.

There is a wide range of schools from kindergartens to elementary schools and high schools, an art school, a bistro, restaurants, and several playgrounds. Just a few steps from the building is a **forest park with the Prosek Rocks Natural Monument and beautiful views of Prague**, and the revitalized **Friendship Park** with water features is also nearby. The Prosek metro station (line C) is within a few minutes' walk or 1 bus stop, which stops right next to the building.

Interior 83.77 m², balcony 4.24 m².

In addition to regular property viewings, we also offer **real time video viewings** via WhatsApp, FaceTime, Messenger, Skype, and other apps.

\* Area of the unit according to the Civil Code. The area consists of the sum total area of the entire unit bounded by perimeter walls.



## Apartment Two-bedroom (3+kk)

**Sold**

84 m², Prague 9, Prosek, Na Prosecké vyhlídce

