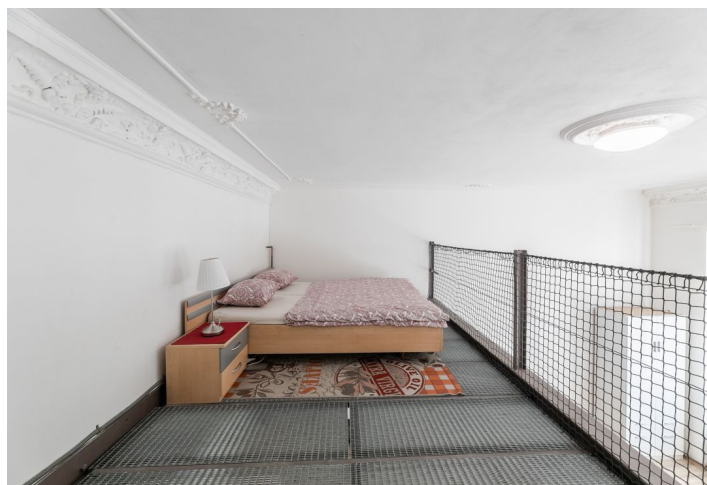




## Apartment Studio (1+kk)

50 m², Prague 8, Karlín, Pernerova

**Sold**





## Apartment Studio (1+kk)

**Sold**50 m<sup>2</sup>, Prague 8, Karlín, Pernerova

Total area	50 m <sup>2</sup>
Parking	-
Cellar	-
Service price	2 600 CZK monthly
PENB	E
Reference number	35552

This south-facing apartment is located on the 1st floor of a classic apartment building with preserved original architectural elements in the sought-after district of Karlín, located in the wider city center. In addition to great accessibility by public transport, car, and bicycle, the place also provides high-level services.

The layout consists of a living room with a kitchen, an **elevated sleeping loft**, a bathroom, a hallway, and a closet.

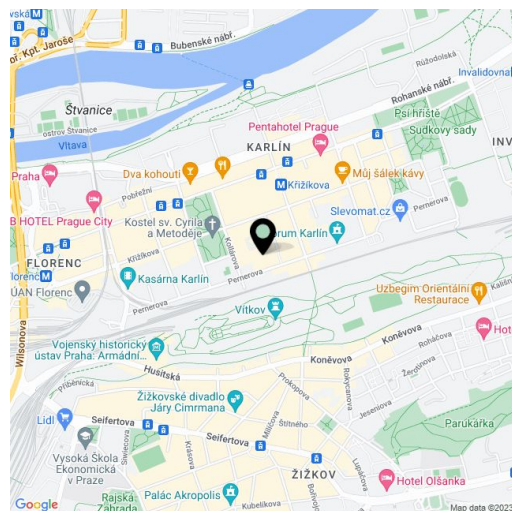
Facilities include double-glazed **casement windows**, **stucco ceiling decoration**, laminate floors and large-format tiles, a security entrance door, and quality **wall soundproofing**. Heating is by modern gas WAW radiators. The building has been reconstructed; the facade will be renovated. The common areas are decorated with original railings, grilles, and terrazzo.

Landscaped Pernerova Street is lined with **mature trees**. The building is close to the Corso Karlín office complex, through which you can walk to the nearby Křižíkova metro station or tram stop. Thanks to a network of **bike trails** and the neighborhood's flat terrain, the place is easily accessible by bike. The **Forum Karlín** multifunctional space, as well as many cafes, restaurants and bistros, small shops and supermarkets are in the immediate vicinity. It is also close to the **large park on Vítkov Hill**.

Interior 50.3 m<sup>2</sup>.

The apartment is in cooperative ownership, transfer to private ownership is possible in 2020.

In addition to regular property viewings, we also offer real time video viewings via WhatsApp, FaceTime, Messenger, Skype, and other apps.



\* Area of the unit according to the Civil Code. The area consists of the sum total area of the entire unit bounded by perimeter walls.

