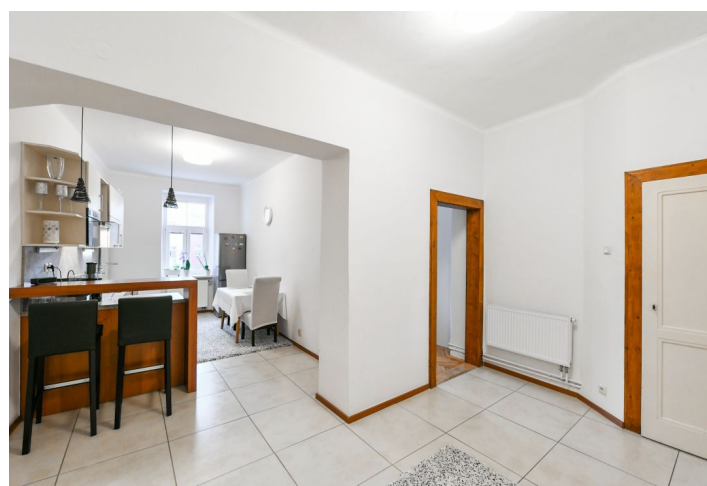




Apartment One-bedroom (2+1)

Sold

71 m², Prague 8, Libeň, V Mezihoří





Apartment One-bedroom (2+1)

Sold

71 m², Prague 8, Libeň, V Mezihoří

Total area	71 m²
Parking	-
Cellar	Yes
PENB	G
Reference number	36915

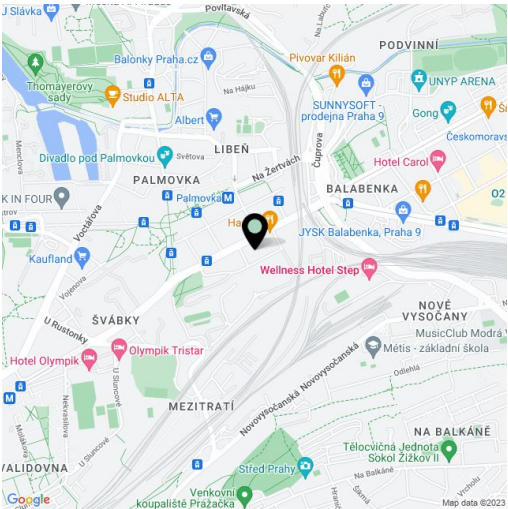
This quiet apartment with pleasant views and the possibility of using a balcony and terrace is located on the 2nd floor of a classic apartment building on a quiet section of V Mezihoří Street, only a short walk from the Palmovka metro station and tram stops.

The layout consists of a south-facing living room, a bedroom with a north-facing window that overlooks a **green courtyard**, a kitchen with a pantry, a bathroom with a bathtub, a separate toilet, and an entrance hall.

The interior has been partially reconstructed. Facilities include new plastic windows, a new security entrance door, **refurbished parquet floors**, and a kitchen with all the necessary appliances. The building with an **elevator** has a new roof and facade; the common areas are maintained. Residents can use the common balcony for the apartments on the same floor as well as a **terrace with nice views**. The unit comes with a **cellar**.

The building is located on a one-way street with plenty of greenery, in an area with full amenities—a post office, grocery store, several restaurants, and cafes. A supermarket, pharmacy, or the **Pod Palmovkou Theater** are all withing walking distance. Perfect accessibility is ensured by the metro and many tram and bus lines.

Interior 71 m² (total floor area according to the owner's declaration with an extra partition 68 m²).



* Area of the unit according to the Civil Code. The area consists of the sum total area of the entire unit bounded by perimeter walls.