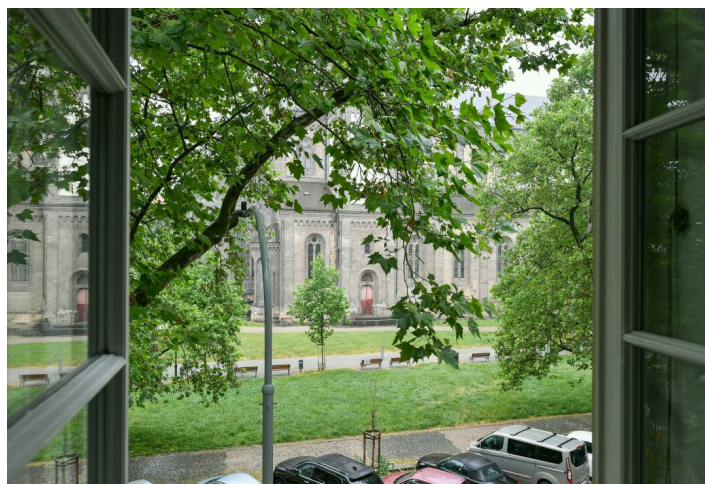
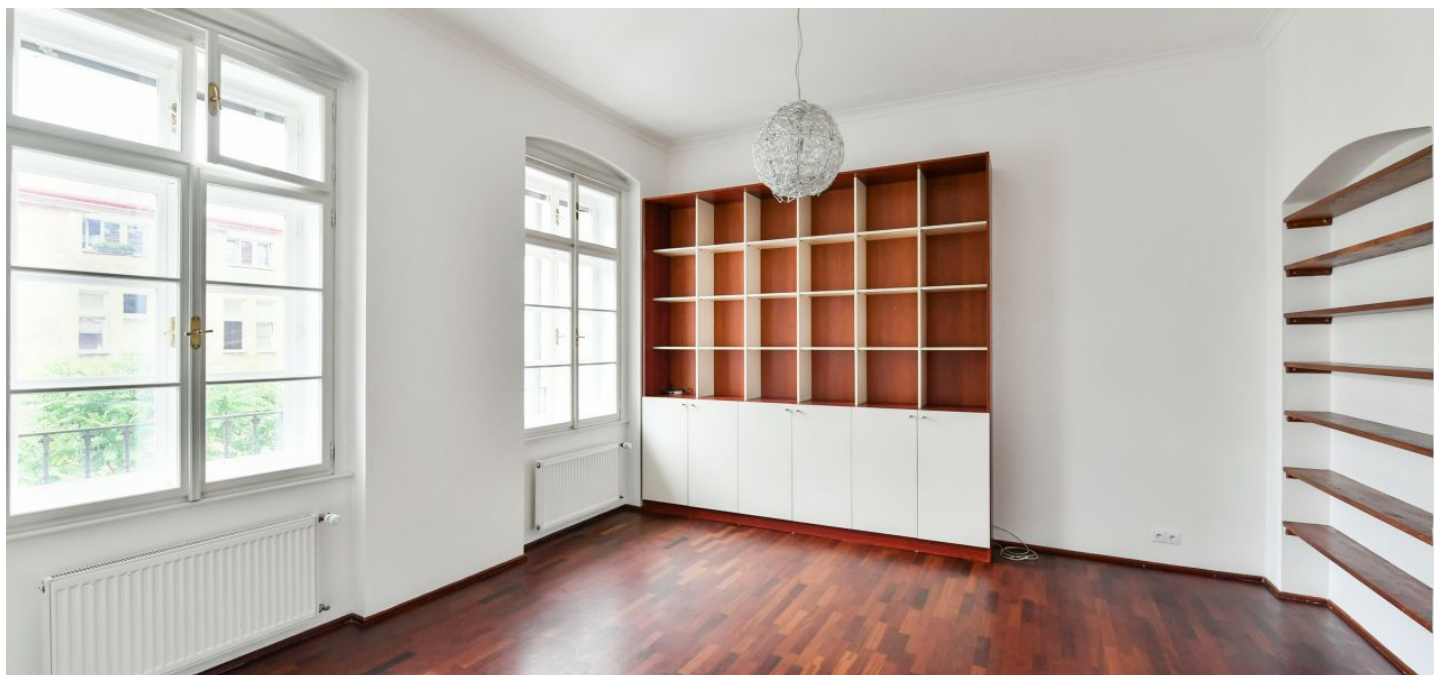




## Apartment Two-bedroom (3+kk)

Sold

65 m², Prague 8, Karlín, Kollárova





## Apartment Two-bedroom (3+kk)

**Sold**65 m<sup>2</sup>, Prague 8, Karlín, Kollárova

Total area	65 m <sup>2</sup>
Parking	-
Cellar	Yes
Service price	5 834 CZK monthly
PENB	D
Reference number	38451

This cozy apartment with beautiful views of the park on Karlín Square and the Church of St. Cyril and Methodius is located on the 2nd floor of a residential project that involved the reconstruction and completion of a building from the mid-19th century. Situated in the Karlín district with a unique atmosphere and all the necessary infrastructure, which, together with the proximity of the city center, makes Karlín a perfect place for urban living.

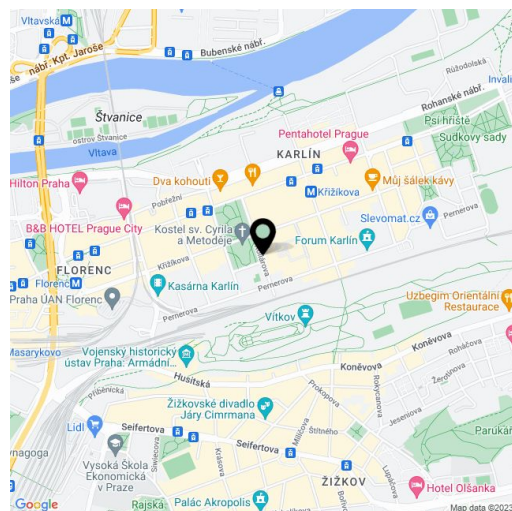
The layout consists of a living room, a partially separate kitchen, 2 bedrooms, a bathroom, a separate toilet, a hallway, and a foyer entered from the gallery.

With high ceilings, the interior is illuminated by a number of new **casement windows**. Central heating. The unit comes with a **cellar**; it is possible to rent a parking space in the courtyard.

The building is located in the **monument zone of Karlín**, directly on revitalized Karlín Square. There are many nice bistros, cafes, and restaurants in the area. It is close to the **Forum Karlín** or **Karlínské Kasárny** multifunctional spaces. Within easy walking distance are kindergartens, elementary and secondary schools, a high school, or a house for children and youth. The city center is a few minutes away by subway or tram, but also by bike or scooter. The place is surrounded by greenery: there are gardens on the squares, tree-lined streets, and the **large park on Vítkov Hill**.

Interior 65 m<sup>2</sup>.

In addition to regular property viewings, we also offer real-time video viewings via WhatsApp, FaceTime, Messenger, Skype, and other apps.



\* Area of the unit according to the Civil Code. The area consists of the sum total area of the entire unit bounded by perimeter walls.



