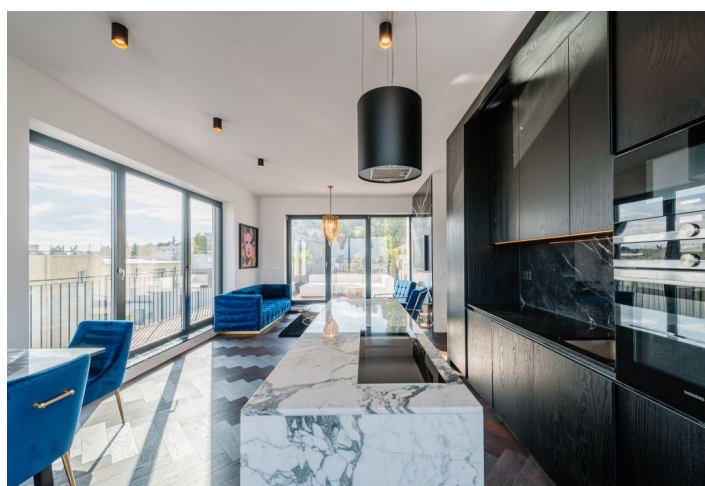
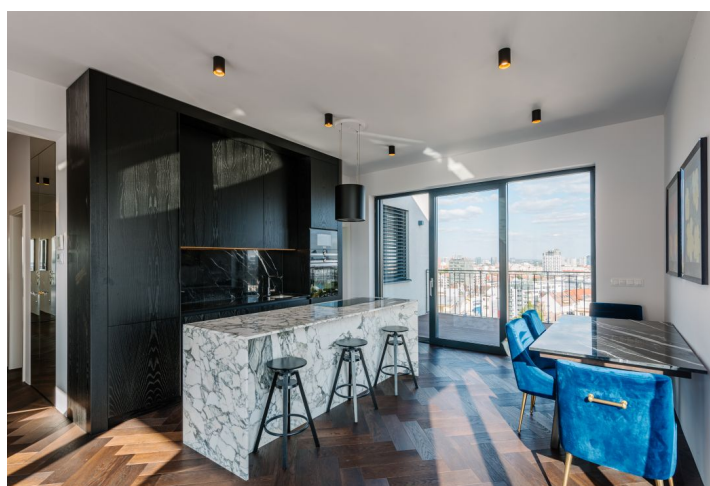
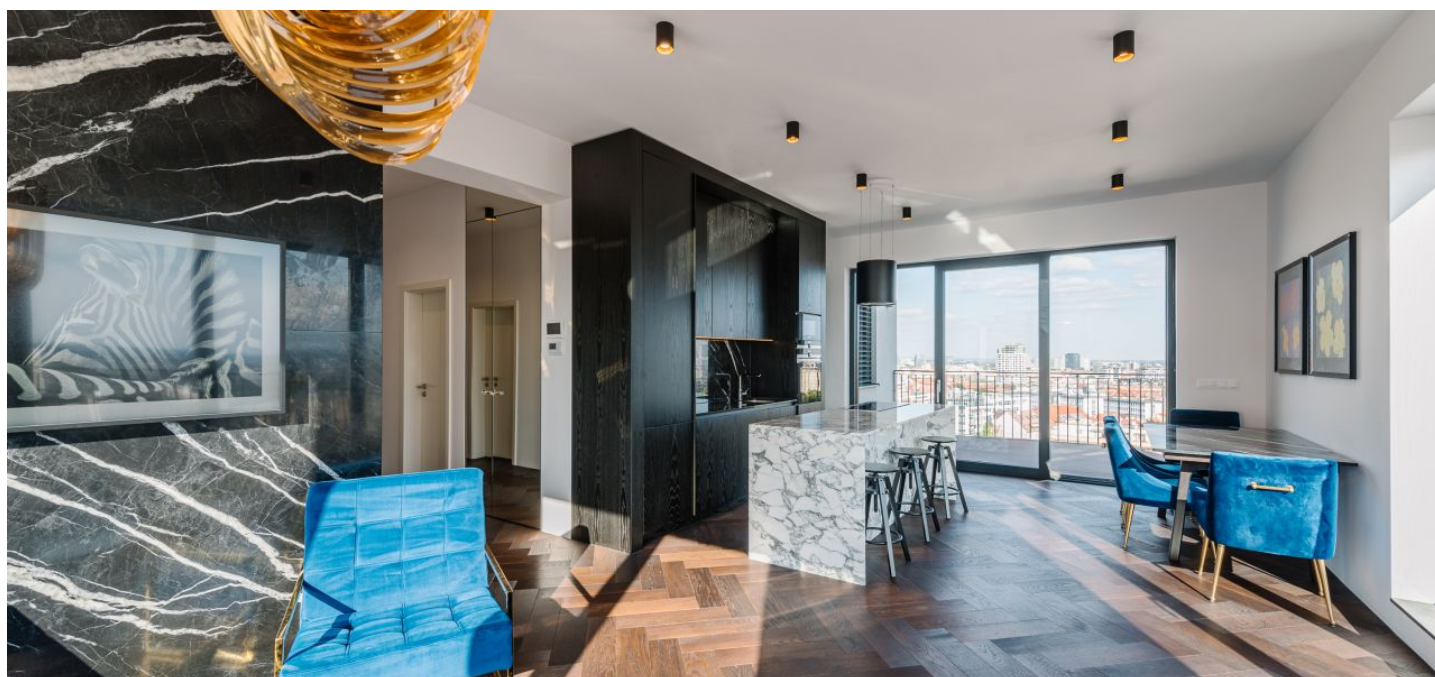




## Apartment Three-bedroom (4+kk)

€ 2 600 | CZK 63 986

101 m², Bratislava I, Staré Mesto





## Apartment Three-bedroom (4+kk)

€ 2 600 | CZK 63 986

101 m², Bratislava I, Staré Mesto

Total area	183 m²
Floor area*	101 m²
Terrace	82 m²
Parking	parking space € 200
Garage	Yes
Cellar	Yes
Service price	250 €
PENB	G
Reference number	40742
Available from	04.08.2025

\* Area of the unit according to the Civil Code. The area consists of the sum total area of the entire unit bounded by perimeter walls.

**This 3-bedroom penthouse for rent without any neighbours and high ceilings is situated on the rooftop floor with terraces and panoramic views of Bratislava in a modern renovated historic building in the lucrative Slavín district with an elevator, a cellar, and a parking space.**

The layout of the apartment consists of an entrance hall with a built-in wardrobe, a living room with a kitchen and dining area, 2x separate walk-in wardrobe, a bedroom with access to the terrace overlooking Koliba and Vinohrady, a master bedroom overlooking Slavín, a third bedroom overlooking the city, a separate toilet with a sink, and a bathroom tiled with marble and a walk-in shower. All bedrooms, including the living room, have access to the terrace that wraps around the entire apartment. The apartment comes with a cellar storage unit and a parking space for an additional fee.

Standard facilities include wooden oak parquet floors, underfloor heating, a Viessman gas boiler, ceiling cooling, triple-glazed aluminium windows, exterior aluminium electric blinds, security doors, a marble kitchen island, Siemens kitchen appliances, a Samsung QLED FRAME TV, luxury light fixtures, and designer furniture.

The location has an excellent strategic position—it is close to the Presidential Palace and garden, Bratislava Castle, and the historic center. The neighborhood is one of the most desirable in Bratislava. The center can be reached within 5 minutes on foot and it's also a short walk to a forest park. Excellent accessibility to anywhere in Bratislava either by public transport or by car.

Interior 101 sq.m., terraces 82 sq.m.