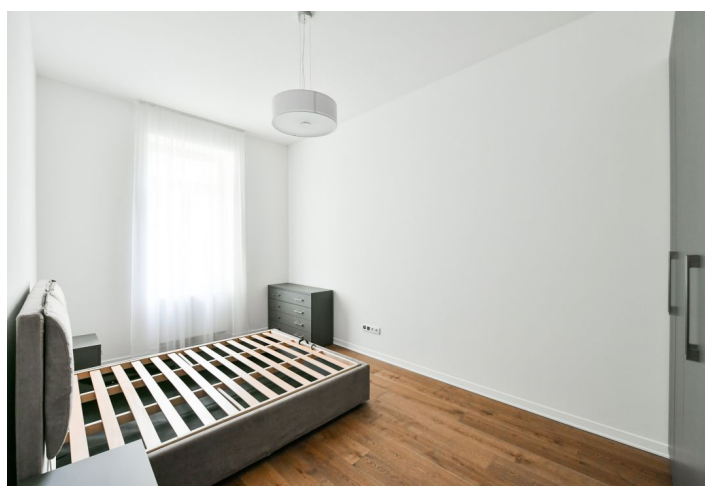
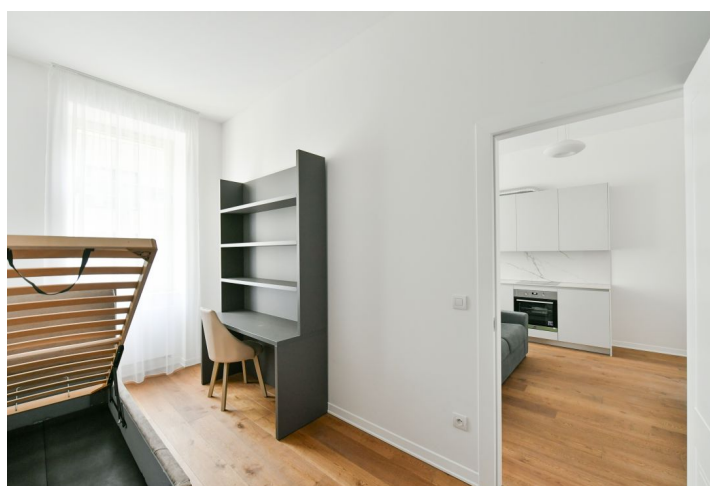
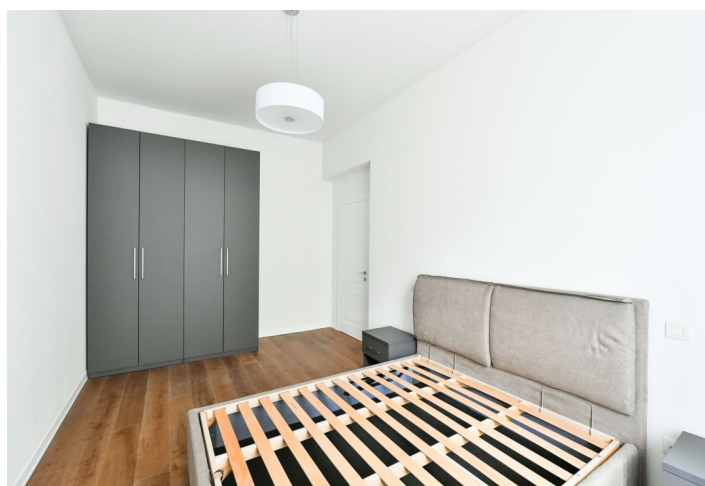




Apartment Two-bedroom (3+kk)

Sold

68 m², Prague 5, Smíchov, Kmochova





Apartment Two-bedroom (3+kk)

Sold

68 m², Prague 5, Smíchov, Kmochova

Total area	68 m²
Parking	-
Cellar	Yes
PENB	G
Reference number	41168

This completely renovated and well-equipped apartment is on the 1st floor of an ornate, recently renovated brick building with an elevator in an attractive residential area in Hřebenky near Sacré Coeur Park, through which you can quickly reach the Anděl pedestrian zone in Smíchov.

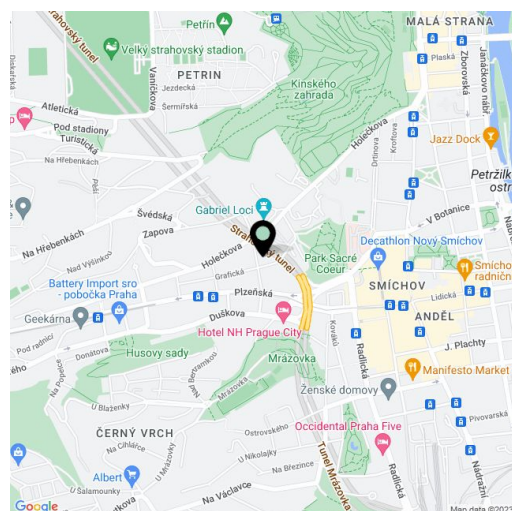
The layout consists of a living room with a kitchen and dining room, a master bedroom facing a **quiet courtyard**, a second bedroom, a bathroom (with a shower and toilet), and a hallway.

Facilities include quality **wooden floors**, tiles, a fully equipped kitchen (including a dishwasher), a security entrance door, and energy-saving faucets. Central heating. The purchase price includes a **cellar storage unit**.

The corner historic building, in which the apartment is located, is situated on a side street between **Sacré Coeur Park, the Petřín Gardens, and Bertramka Garden**. A grocery store, a cafe, and an elementary school are nearby and the **French Lyceum** as well as a host of other services are within easy reach. Buses provide connections to the Karlovo náměstí metro station, and the **Anděl** tram stop and metro station is within walking distance. When traveling by car, an advantage is the easy connection to a tunnel complex.

Interior 68.2 m², cellar 1.5 m².

In addition to regular property viewings, we also offer real-time video viewings via WhatsApp, FaceTime, Messenger, Skype, and other apps.



* Area of the unit according to the Civil Code. The area consists of the sum total area of the entire unit bounded by perimeter walls.



Apartment Two-bedroom (3+kk)

Sold

68 m², Prague 5, Smíchov, Kmochova

