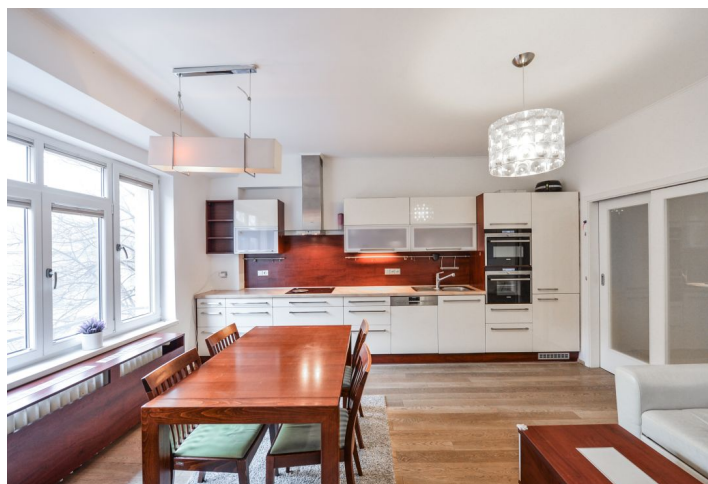
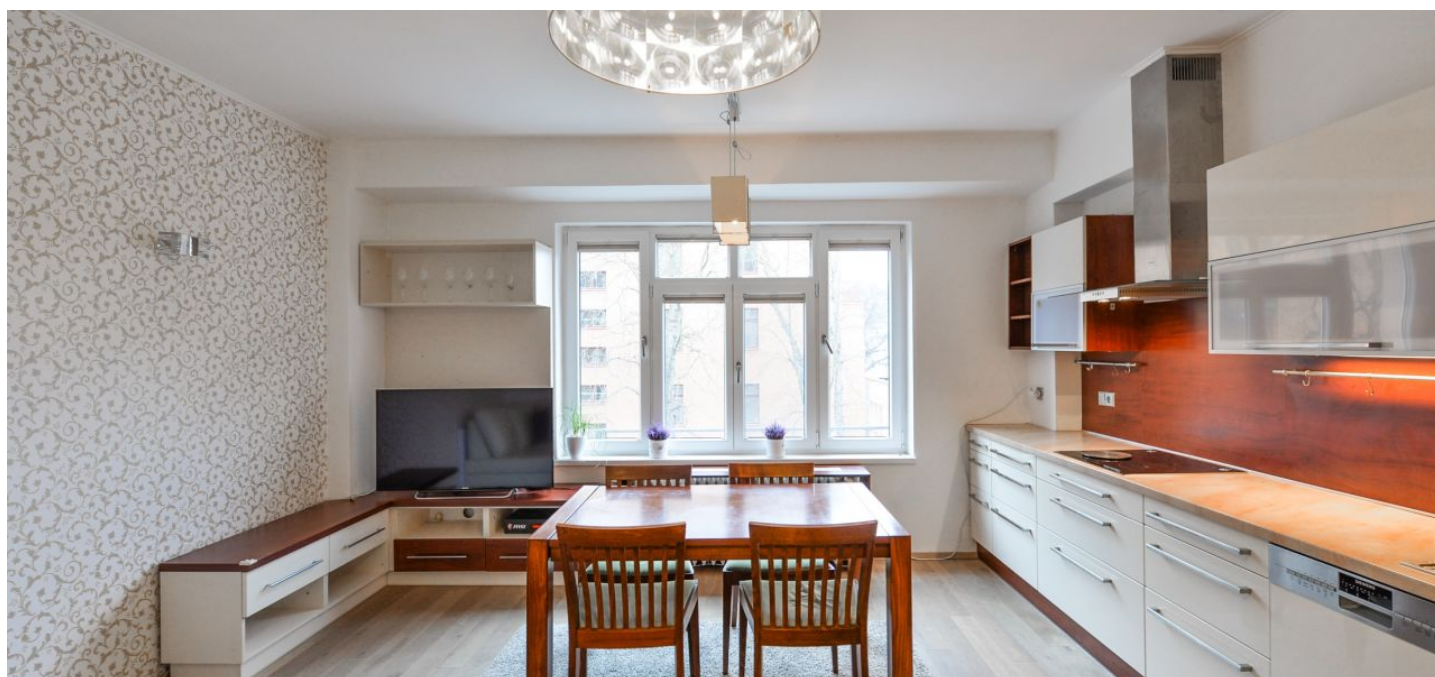




Apartment Three-bedroom (4+kk)

Sold

86 m², Prague 6, Dejvice, Generála Píky





Apartment Three-bedroom (4+kk)

Sold

86 m², Prague 6, Dejvice, Generála Píky

Total area	91 m²
Floor area*	86 m²
Balcony	2 m²
Loggia	3 m²
Parking	-
Cellar	-
Service price	4 891 CZK monthly
PENB	C
Reference number	41376

This sunny apartment with a balcony and a glazed loggia is located on the 2nd floor of a completely renovated classic apartment building with an elevator. The building is part of the elegant district of Prague 6 - Dejvice and is close to the metro station and tram stop on Vítězné Square and within walking distance of Prague Castle.

The apartment is conveniently divided into a living room with a kitchen, a study usable as a guest room or bedroom, another 2 bedrooms with **windows towards the garden** in the courtyard, a bathroom (with a bath and toilet), a separate toilet, and an entrance hall. The study has a **south-facing balcony**; one bedroom has a **glazed loggia/winter garden**.

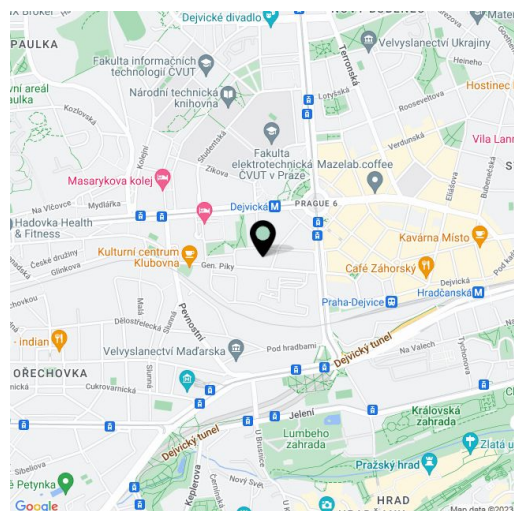
Facilities include **hardwood bleached oak floors**, quality plastic windows with interior blinds, a modern kitchen with **Siemens** appliances, built-in furniture, **Laufen and Kaldewei sanitary ware**, a **heated bathroom floor**, and cast iron radiators. Heating is remote. The apartment comes with a **cellar storage unit**. The building has been completely renovated (including electricity and gas distribution, risers, roof, insulation, etc.).

This attractive location next to the Ořechovka residential area offers a full-fledged infrastructure, which includes, for example, the international **Riverside School Prague** Junior High, university faculties, quality restaurants, cafés, and a traditional **farmers' market**. The district has convenient connections to the city center by subway, tram, and train. The drive to the airport is also fast. Within walking distance is **Prague Castle, the Deer Moat, the Royal Garden, Chotkovy Sady Garden**, or the new **Marie Terezie Park**.

Interior 86 m², balcony 2.4 m², loggia 2.5 m², cellar about 5 m².

The apartment is rented until the end of August 2022.

In addition to regular property viewings, we also offer real-time video viewings via WhatsApp, FaceTime, Messenger, Skype, and other apps.



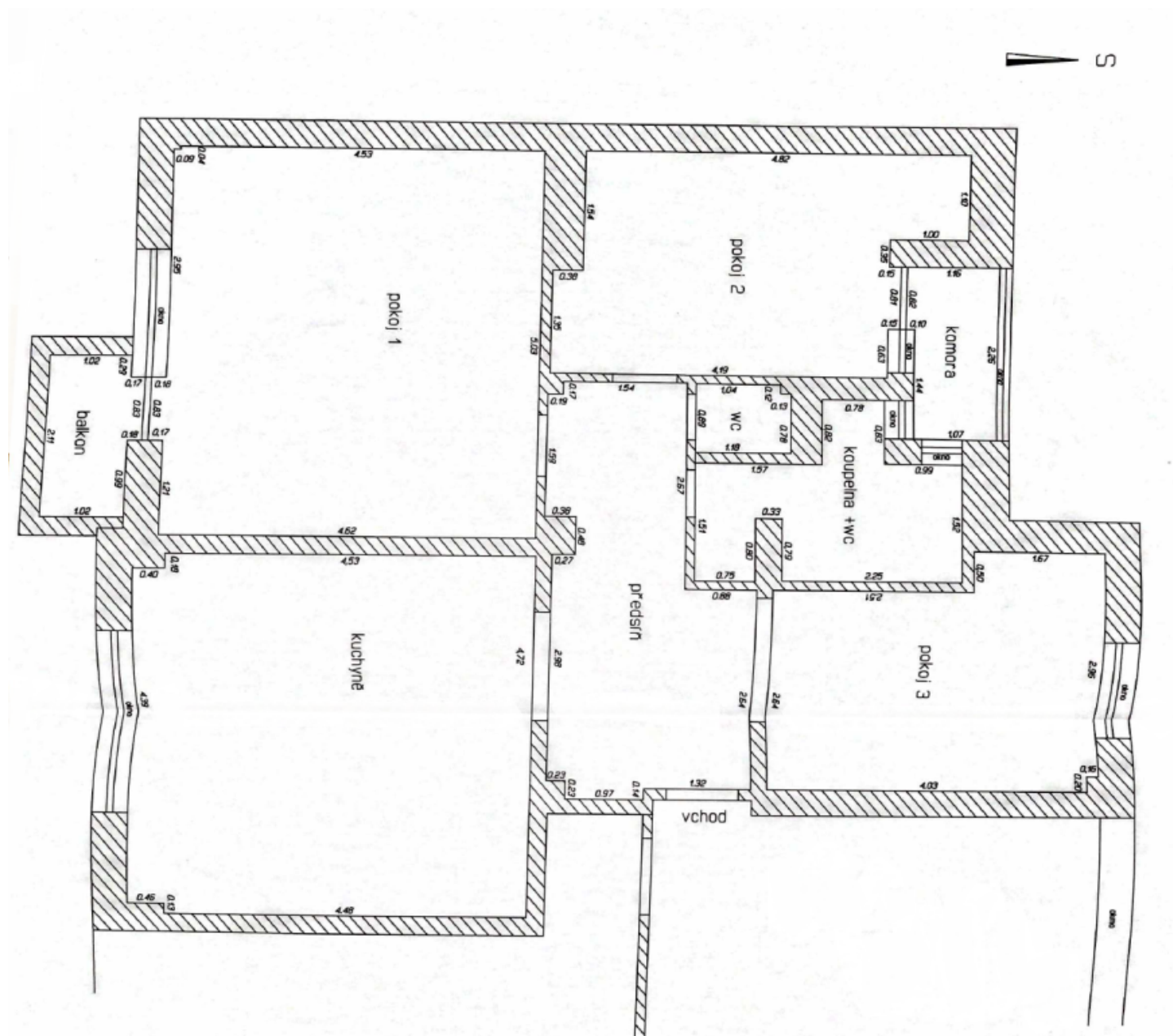
* Area of the unit according to the Civil Code. The area consists of the sum total area of the entire unit bounded by perimeter walls.



Apartment Three-bedroom (4+kk)

Sold

86 m², Prague 6, Dejvice, Generála Píky



Generála Píky

pokoj 1	23,4 m ²
pokoj 2	12,7 m ²
pokoj 3	11,9 m ²
kuchyně	23,1 m ²
předstín	11,1 m ²
koupelna + WC	5,4 m ²
WC	1,0 m ²
komora	2,5 m ²
balcon	2,3 m²
celkem	91,1 m²



měřítko : 1 : 50
č.z. 1/2016
vyhotovil: Ing. Janská Marcela v roce 2016