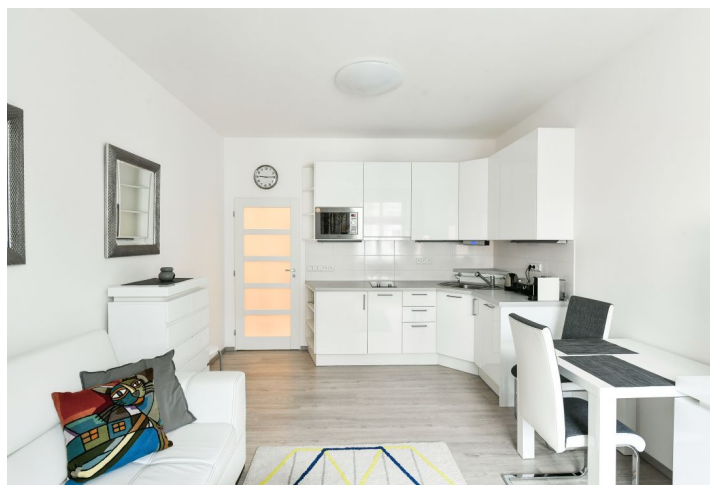
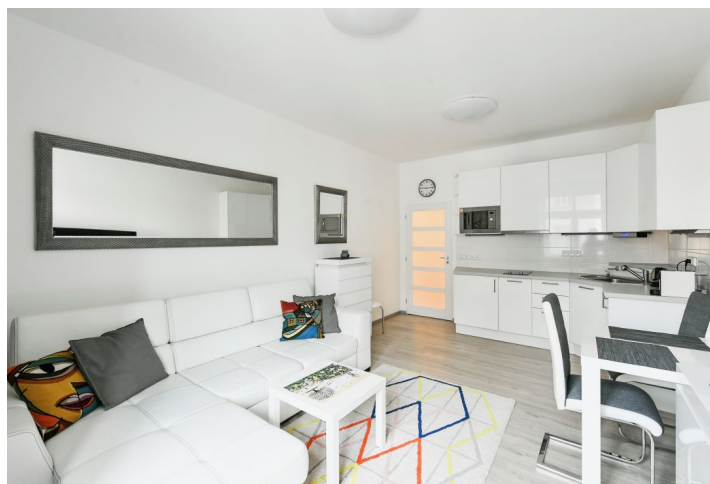




## Apartment One-bedroom (2+kk)

Sold

47.7 m², Prague 4, Nusle, Čestmírova





## Apartment One-bedroom (2+kk)

**Sold**

47.7 m², Prague 4, Nusle, Čestmírova

Total area	48 m²
Parking	-
Cellar	-
Service price	5 218 CZK monthly
PENB	G
Reference number	42716

This renovated and very quiet apartment facing a one-way street is located in an apartment building from the 1930s with an elevator and a common courtyard providing parking (until capacity is full). The building is situated within a few minutes' walk from a future D line metro station on Bratří Synků Square and from the Prague-Vršovice Railway Station.

The layout of the 3rd floor south-facing apartment consists of a living room with a kitchen and dining area, 1 bedroom, a bathroom (with a shower, toilet, and bidet shower), and an entrance hall.

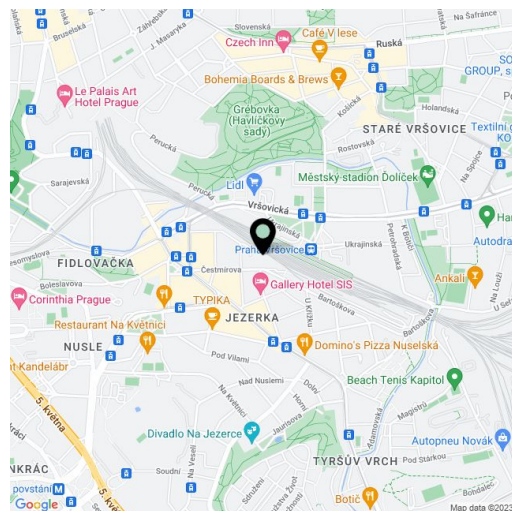
The interior with **high ceilings** was renovated in 2014. Facilities include vinyl floors, a fully equipped kitchen (including a dishwasher and induction hob), built-in wardrobes, security entrance doors, window blinds and shutters, and **mobile air-conditioning**. Central heating. The entrance to the building is via a chip. Residents can use the **balcony** on the mezzanine floor, and a **bike shed/pram room**. There is a limited number of **parking spaces** in the courtyard. The apartment comes with a **cellar** and there is an **elevator** in the building.

Within easy reach are shops, restaurants, medical services, and theaters. The neighborhood is easily accessible by public transport. Just a few steps from the building is a tram stop and train station, from where you can reach the city center and get to the Main Railway Station in 5 minutes. You can also walk to the **Na Fidlovačce**, **Folimanka**, or romantic **Grébovka** parks.

Floor area 47.7 m², cellar 3.8 m².

The apartment is currently rented until 31.7.2024.

\* Area of the unit according to the Civil Code. The area consists of the sum total area of the entire unit bounded by perimeter walls.





## Apartment One-bedroom (2+kk)

Sold

47.7 m<sup>2</sup>, Prague 4, Nusle, Čestmírova

