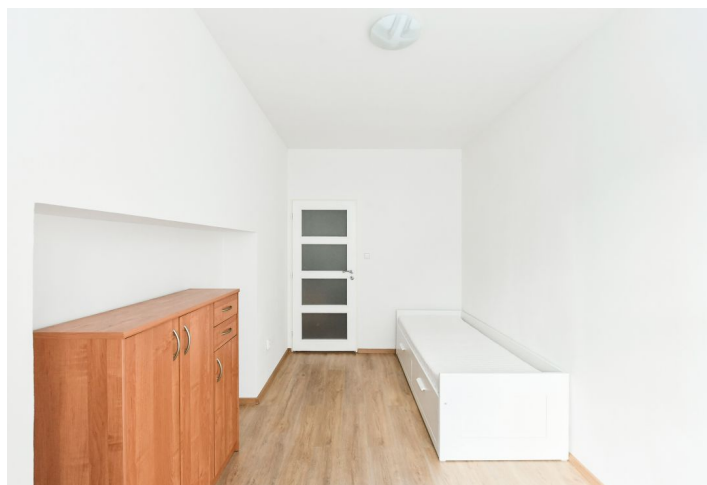
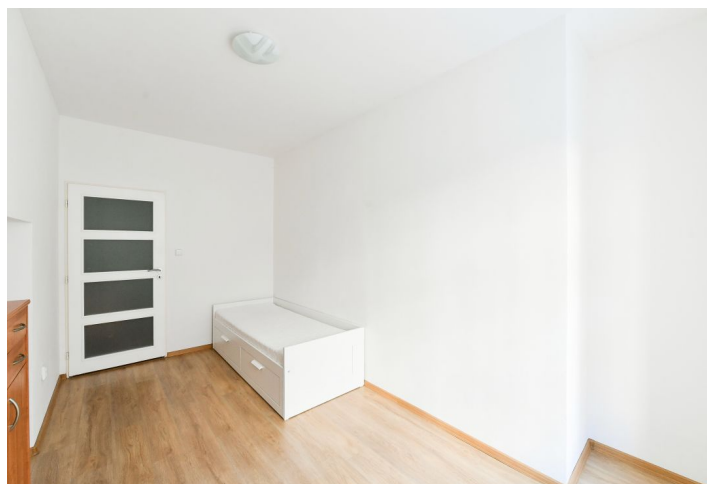
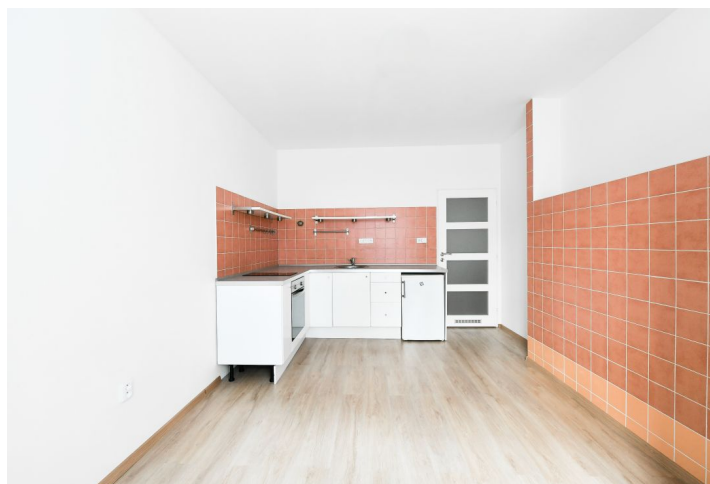




Apartment One-bedroom (2+kk)

Sold

46 m², Prague 3, Žižkov, Viklefova





Apartment One-bedroom (2+kk)

Sold46 m², Prague 3, Žižkov, Viklefova

Total area	46 m ²
Parking	-
Cellar	-
Service price	1 884 CZK monthly
PENB	G
Reference number	43510

This two-room apartment with southwest-facing windows towards the enclosed courtyard is located in the basement of a nicely maintained brick apartment building situated on a one-way street in Žižkov near Židovské Pece Park and the Aero art house cinema.

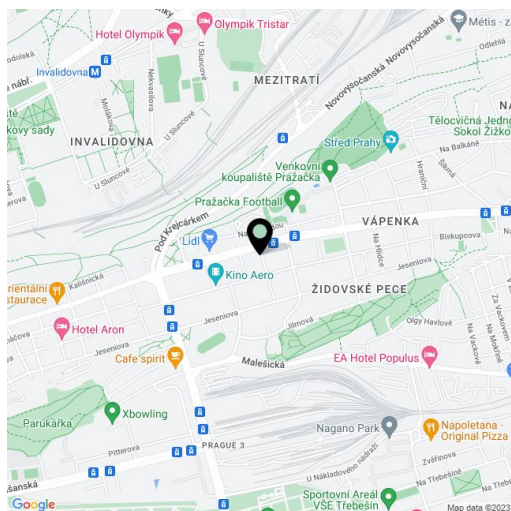
The area of the apartment is divided into a bedroom with a **work corner**, a separate kitchen with a dining room, a bathroom with a bathtub and a toilet, **a large closet**, and a foyer.

There are floating floors in the bedroom and the kitchen, and tiles in the rest of the unit. The windows have **fanlights** and **bars** to guarantee safety, even though they face the enclosed courtyard. A gas boiler provides heating.

The neighborhood with a complete infrastructure is easily accessible; you can get to the city center by tram from a nearby stop in less than 15 minutes or via a **bike path**. There are shops in the immediate vicinity, including a supermarket, a cafe, a restaurant, and a pharmacy. In addition, the location is very nice thanks to the **vast green recreation area** on Pražacka, which is seamlessly connected to the **park on Vítkov Hill**.

Floor area 46 m².

In addition to regular property viewings, we also offer real-time video viewings via WhatsApp, FaceTime, Messenger, Skype, and other apps.



* Area of the unit according to the Civil Code. The area consists of the sum total area of the entire unit bounded by perimeter walls.



Apartment One-bedroom (2+kk)

46 m², Prague 3, Žižkov, Viklefova

Sold

Viklefova 1673/13

Byt 2 + Kk

- 1 Vstupní hala
- 2 Kuchyň
- 3 Pokoj
- 4 Komora
- 5 Koupelna

