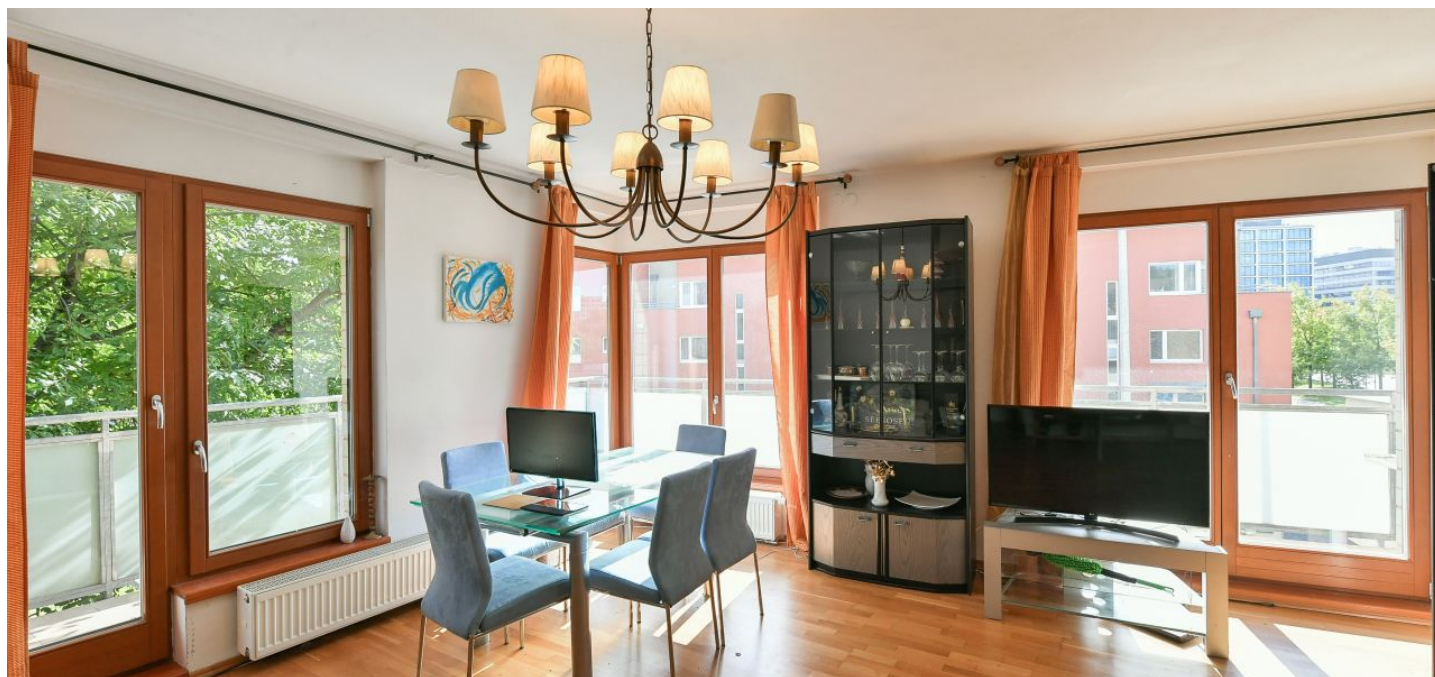




Apartment Two-bedroom (3+1)

103 m², Prague 5, Jinonice

€ 690 215 | CZK 17 000 000





Apartment Two-bedroom (3+1)

€ 690 215 | CZK 17 000 000

103 m², Prague 5, Jinonice

Total area	133 m ²
Floor area*	103 m ²
Terrace	30 m ²
Garden	64 m ²
Parking	Garage parking space
Garage	Yes
Cellar	Yes
PENB	C
Reference number	43961

* Area of the unit according to the Civil Code. The area consists of the sum total area of the entire unit bounded by perimeter walls.

This apartment with a south-facing terrace, a garden lined with mature greenery, and a garage parking space is situated on the side of a building in a modern and quiet residential area immediately adjacent to the Vidoule natural monument, within walking distance of a metro station and complete amenities.

The layout of the 2nd floor apartment consists of a **sunny corner living room** with access to **a large terrace and garden**, a kitchen with a pantry, 2 bedrooms, a bathroom (with a bathtub with a shower screen, 2 sinks, a toilet, and a bidet), a separate toilet, a utility room, and a hallway with custom-made closets. Both bedrooms have **access to the garden**. The current 2-bedroom layout can easily be **changed to a 3-bedroom**.

The residential project was completed in 2005. Facilities include **wooden floating floors** and tiles, Laufen designer sanitary ware, **insulated wooden double-glazed Euro windows**, german-made aluminum roller shutters with remote control on the doors and windows towards the terrace and garden, central heating with the possibility of individual regulation, a chimney for a fireplace, thermostat in each room, security doors, a **videophone**, a fully fitted quality brand-name kitchen (including a **dishwasher**), and **a safe**. The apartment comes with **1 garage space** and **a cellar storage unit**; residents can use the **bike room**. The common areas of the building are nicely maintained.

Excellent accessibility to the city center thanks to the Nové Butovice metro station, approx. a 7-minute walk away. The **Deutsche Schule Prag** and a playground are accross the street; a state kindergarten and elementary school, a playground, the Nové Butovice shopping mall, University Hospital Motol, restaurants, and cafes are nearby. The surroundings also offer a wide range of opportunities for **walks in nature**; in addition to the **Vidoule natural monument**, the **Cibulka forest park** is close-by, and **a golf course** is not far away. Getting around by car is made easy thanks to the quick connection to the Prague Ring Road.

Floor area 103.47 m², terrace 30.18 m², garden 64 m².



Apartment Two-bedroom (3+1)

103 m², Prague 5, Jinonice

€ 690 215 | CZK 17 000 000

- 1 Chodba
- 2 Koupelna + WC
- 3 Kuchyně
- 4 Spíž
- 5 Obývací
- 6 Šatna
- 7 Chodba
- 8 Koupelna
- 9 Pokoj
- 10 Pokoj
- 11 Terasa
- 12 Zahrada

