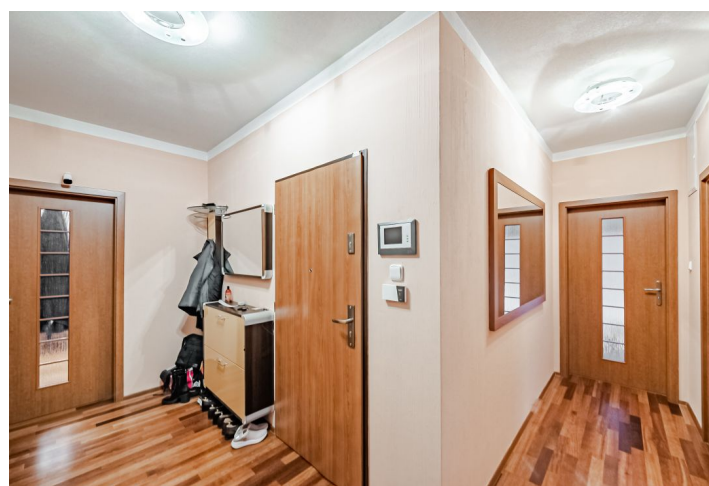




Apartment Three-bedroom (4+kk)

Sold

98 m², Prague 4, Michle, U Michelského mlýna





Apartment Three-bedroom (4+kk)

Sold

98 m², Prague 4, Michle, U Michelského mlýna

Total area	106 m²
Floor area*	98 m²
Loggia	8 m²
Parking	700 000 CZK
Garage	Yes
Cellar	-
Service price	6 900 CZK monthly
PENB	C
Reference number	43987

This fully equipped modern apartment with two loggias is situated on the 1st floor of a small apartment building with an elevator and a garage in a quiet part of Prague 4 - Michle between Jezerka Park and Tyršův Hill, in a place with excellent access to the city center. The possibility of taking over a mortgage loan from Komerční banka with the current rate of 2.2 % and fixation until 2030.

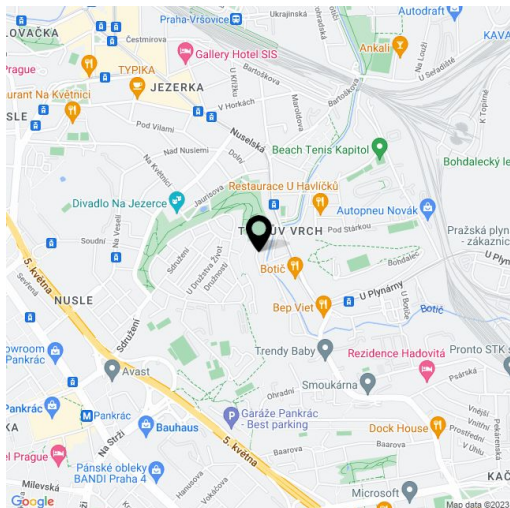
The almost hundred-meter apartment consists of a living room with a kitchen and a loggia, 3 bedrooms (1 with a dressing room and 2 with a common loggia), a bathroom (with a bathtub and shower), a toilet, a utility room, and an entrance hall.

The apartment building with only 9 units was completed in 2009. Facilities include **wooden floors**, floor-to-ceiling wooden French windows with blinds, a security entrance door, a **video phone**, and an alarm. The kitchen is equipped with built-in appliances. Central gas heating. The purchase price includes **all interior fittings**, a **large cellar**, and a **garage parking space** in an automated parking system.

A quiet location with plenty of greenery and amenities within easy reach, including restaurants, shops, an elementary school, a post office, a sports field, a **theater**, and a library. The surrounding area offers several options for **walks in nature**, either to the **Jezerka city park** or to the **wooded Tyršův Hill**. Easy access to the city center by tram, and in the future a D line metro station will be located nearby.

Interior 97.41 m², loggia 5.22 m² and 3.36 m², cellar 9 m².

In addition to regular property viewings, we also offer real-time video viewings via WhatsApp, FaceTime, Messenger, Skype, and other apps.



* Area of the unit according to the Civil Code. The area consists of the sum total area of the entire unit bounded by perimeter walls.