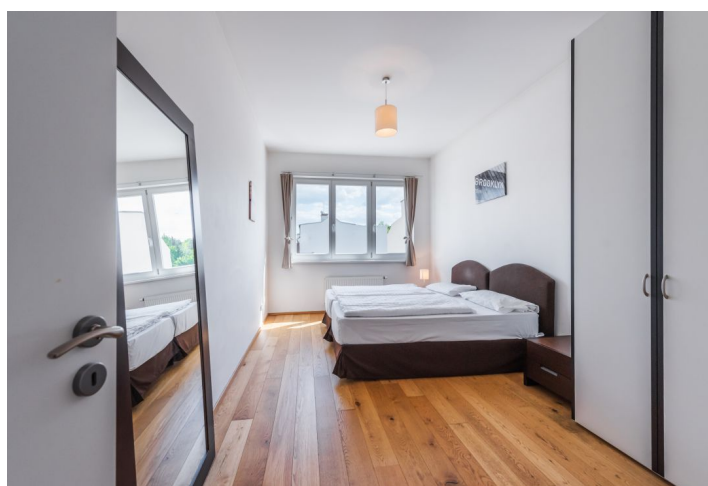
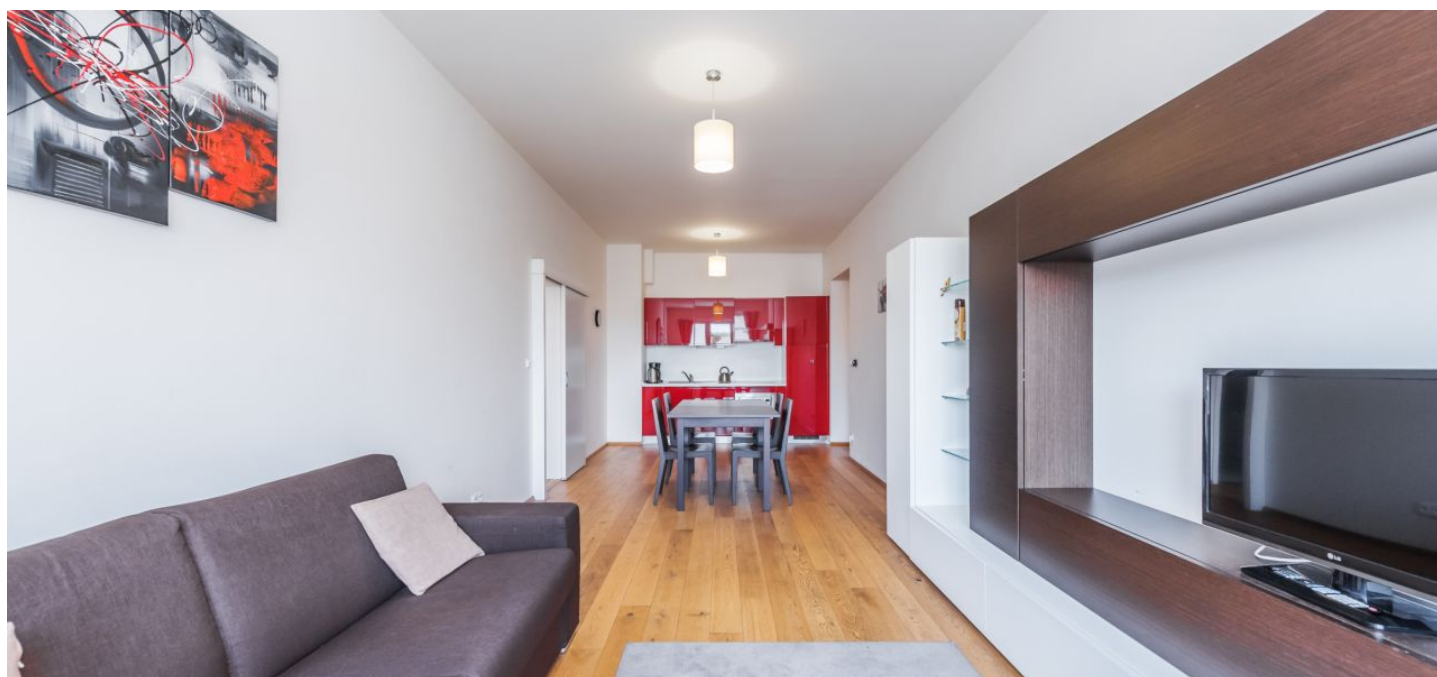




## Apartment One-bedroom (2+kk)

**Sold**

65 m<sup>2</sup>, Prague 5, Smíchov, Drtinova





## Apartment One-bedroom (2+kk)

**Sold**65 m<sup>2</sup>, Prague 5, Smíchov, Drtinova

Total area	65 m <sup>2</sup>
Parking	-
Cellar	Yes
PENB	C
Reference number	8335

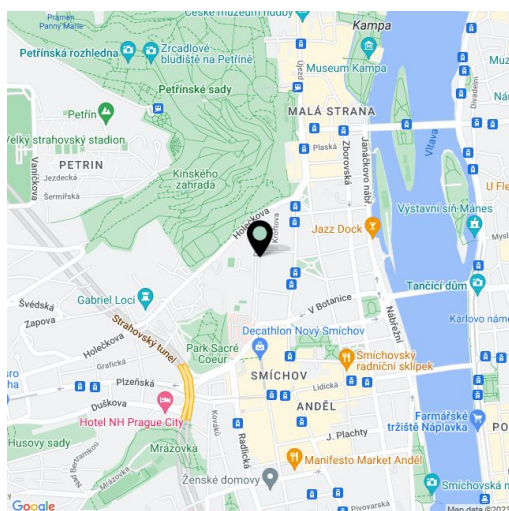
The bright apartment on the 3rd floor of a newly refurbished apartment building with an elevator. A quiet location just steps from the French lyceum and a few minutes from the Anděl shopping and commercial center and metro station.

The layout consists of an open plan living room with a kitchen and a dining area, 1 bedroom, a large bathroom with a bathtub, a bidet, and a toilet, and a utility room.

The facilities include **wooden floors**, wooden windows, a complete kitchen with built-in appliances, and a videophone.

In the immediate vicinity are **full civic amenities**: shops, including a large shopping center, a health center, pharmacies, ATMs, Švandovo Theater, a wide selection of restaurants, cafes, and schools of all levels (including the French Lyceum). There are also **several parks** within walking distance: Kinsky Garden, Petřín Park, and Sacré Coeur. The center is quickly accessible not only by metro, but also by tram from the nearby stop. It takes only 5 minutes to get to Národní třída.

The interior of 64.74 m<sup>2</sup>, cellar 1.3 m<sup>2</sup>.



\* Area of the unit according to the Civil Code. The area consists of the sum total area of the entire unit bounded by perimeter walls.