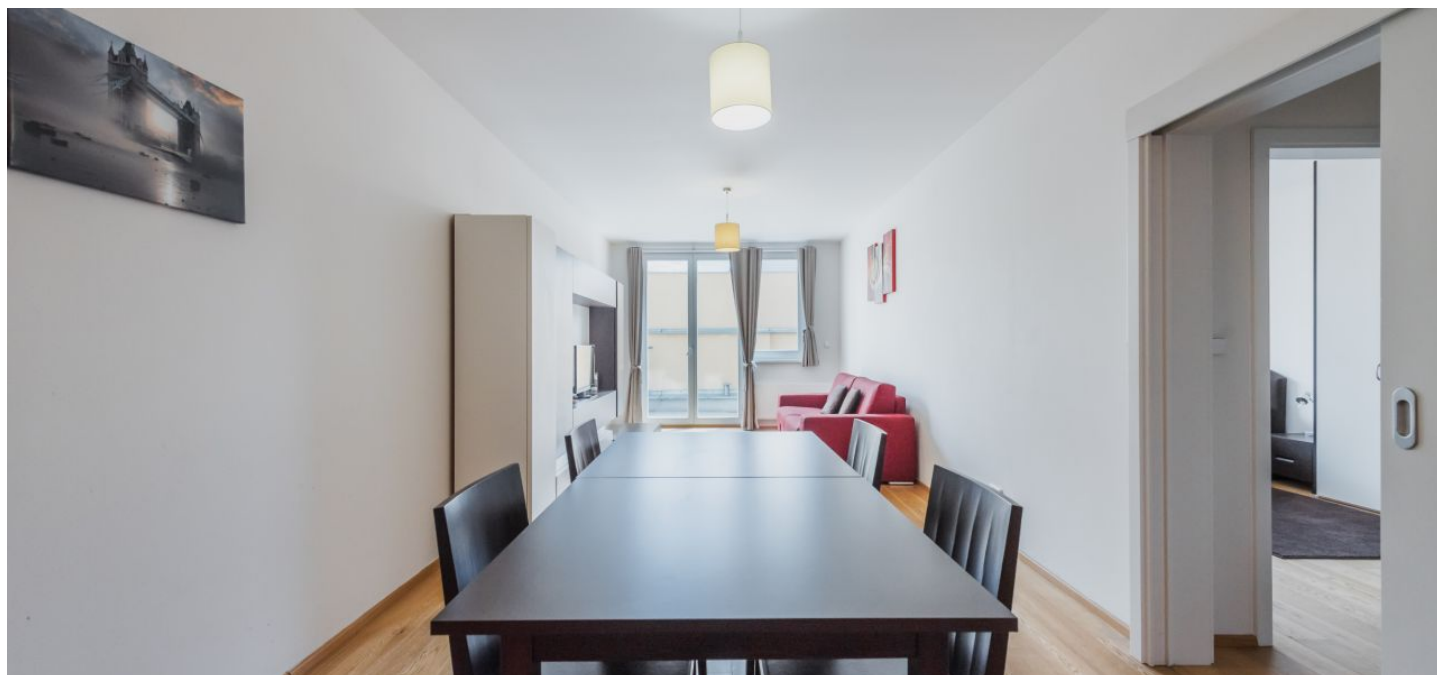




## Apartment One-bedroom (2+kk)

**Sold**

65.1 m<sup>2</sup>, Prague 5, Smíchov, Drtinova





# Apartment One-bedroom (2+kk)

Sold

65.1 m², Prague 5, Smíchov, Drtinova

Total area	95 m²
Floor area*	65 m²
Terrace	30 m²
Parking	-
Cellar	-
PENB	C
Reference number	8418

This bright apartment with a terrace facing the courtyard is situated on the 1st floor of a completely renovated Art Nouveau building with a new elevator. Located just a few steps from Kinsky Garden and a few minutes' walk from the Anděl shopping and entertainment center and metro station.

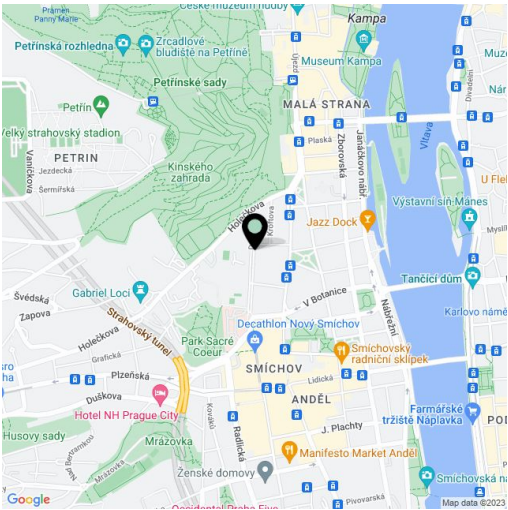
The layout consists of a living room with a kitchen and terrace access, 1 bedroom, a large bathroom (with a corner bath, a bidet, a sink, a toilet, and a heated ladder), a hallway, and a utility room.

The facilities include **wooden floors**, wooden windows, a complete kitchen with built-in appliances, and a videophone.

In the immediate vicinity are full civic amenities: shops, including a large shopping center, a health center, pharmacies, ATMs, Švandovo Theater, a wide selection of restaurants, cafes, and schools of all levels (including the French Lyceum). There are also **several parks** within walking distance: Kinsky Garden, Petřín Park, and Sacré Coeur. The center is quickly accessible not only by metro, but also by tram from the nearby stop. It takes only 5 minutes to get to Národní třída.

Interior 64.75 m², terrace 29.90 m².

In addition to regular property viewings, we also offer **real time video viewings** via WhatsApp, FaceTime, Messenger, Skype, and other apps.



\* Area of the unit according to the Civil Code. The area consists of the sum total area of the entire unit bounded by perimeter walls.



## Apartment One-bedroom (2+kk)

Sold

65.1 m², Prague 5, Smíchov, Drtinova

